

# BI4Dynamics AX Installation Manual

BI4Dynamics AX	7.0.0
Document version	1.0
Last update:	January 2018

CONTENTS

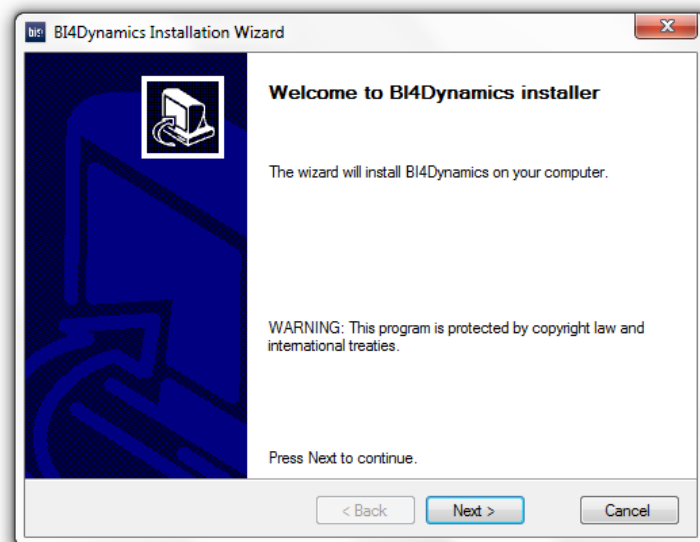
- 1. Install BI4Dynamics..... 2
- 2. CREATE a new instance in BI4Dynamics..... 6
  - Step 1: Enter License ..... 7
  - Step 2: New Instance..... 7
  - Step 3: Add Data Sources ..... 10
  - Step 4: Global dimension..... 12
  - Step 5: Select Companies ..... 13
  - Step 6: Select Modules ..... 15
  - Step 7: Run ..... 16
  - Step 8 Completion ..... 17

# 1. INSTALL BI4DYNAMICS

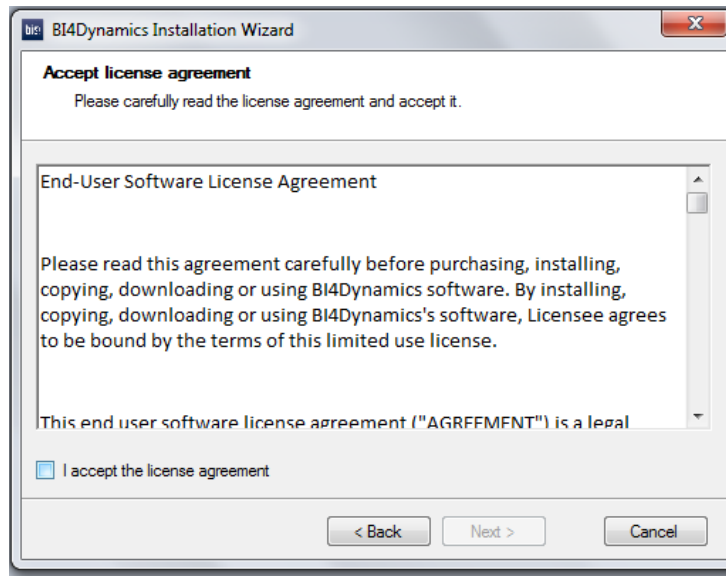
To create an AX instance inside BI4Dynamics, you must have BI4Dynamics AX installed. To do so, please follow the following steps.

*Important: BI4Dynamics must be installed on the server where the instance will be deployed.*

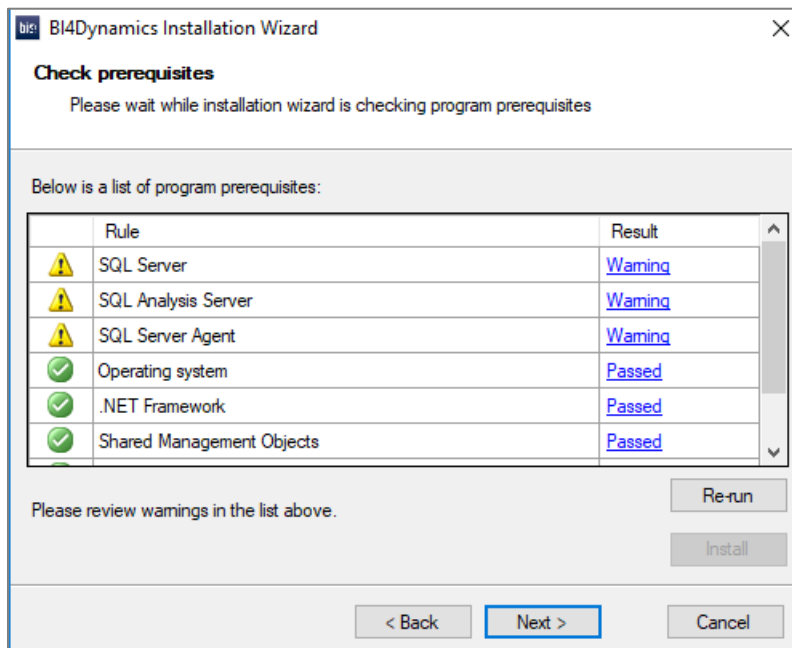
1. Double click BI4DynamicsAX.exe to start the installation  
*Note: the name of the file varies on the version your using.*
2. Follow the instructions on the screen.



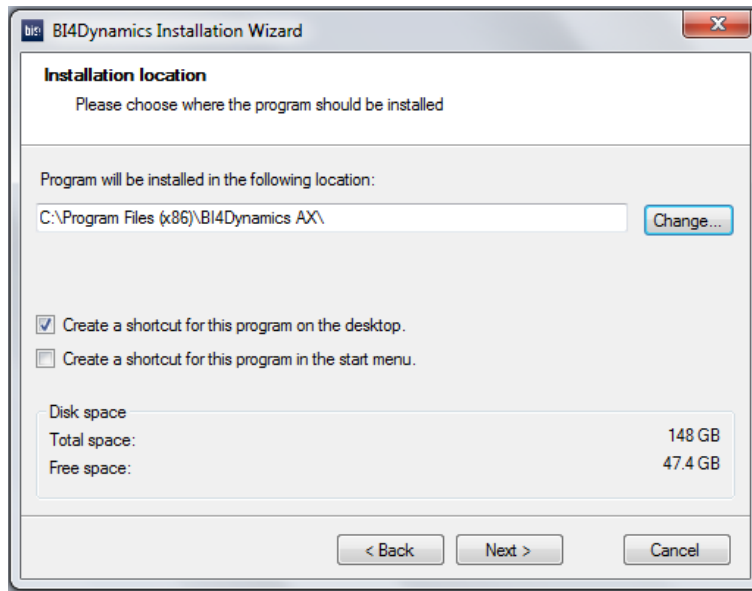
3. Accept the license agreement



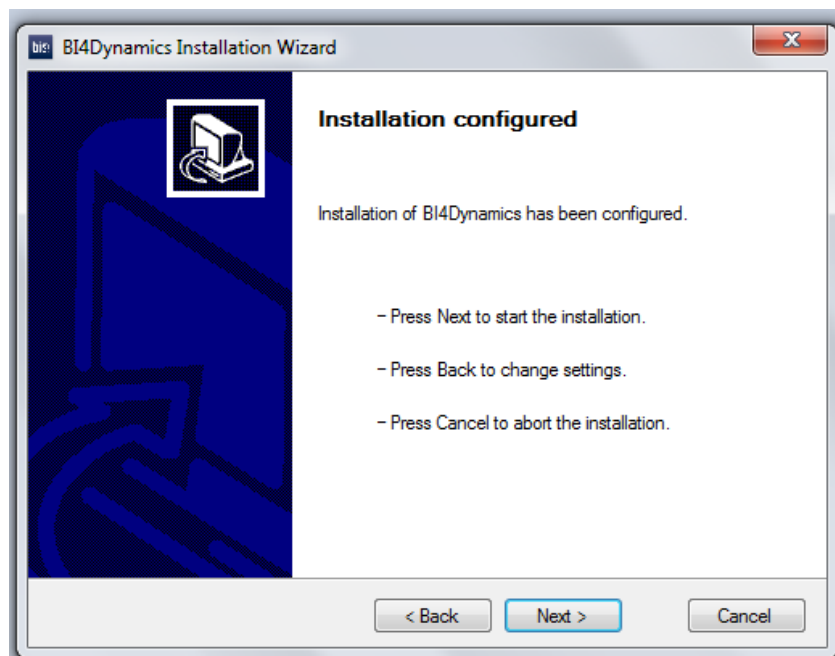
4. The installer will check for some of the prerequisites. If any of the tests fail you can click on the result to see the error. When one of the Management Objects is not installed, you should click the **Install** button to install those. You have to fix the problem before you **rerun** the test. Once all the tests are successfully completed you can continue with the installation.



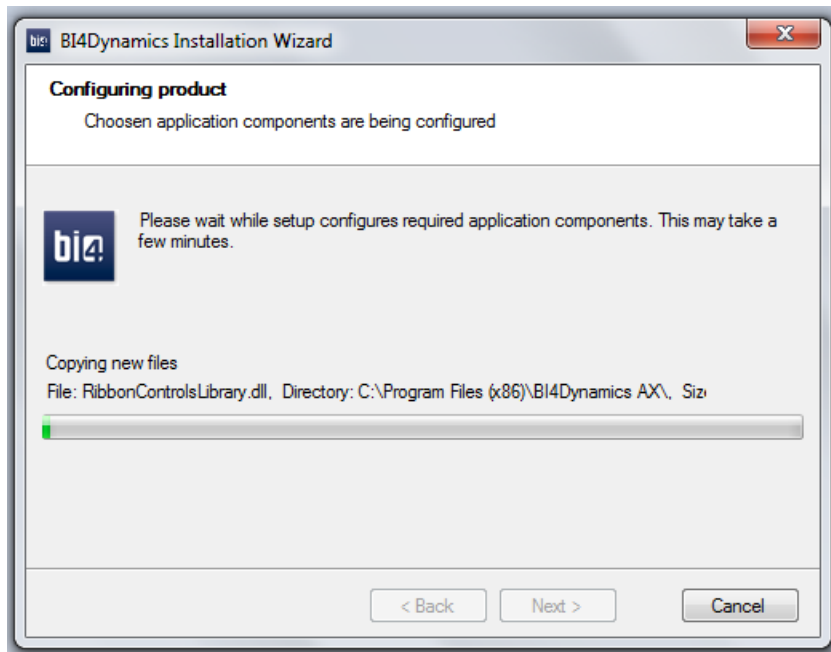
5. Select the folder where you would like to install BI4Dynamics. You can choose to create a shortcut on the desktop or in the start menu.



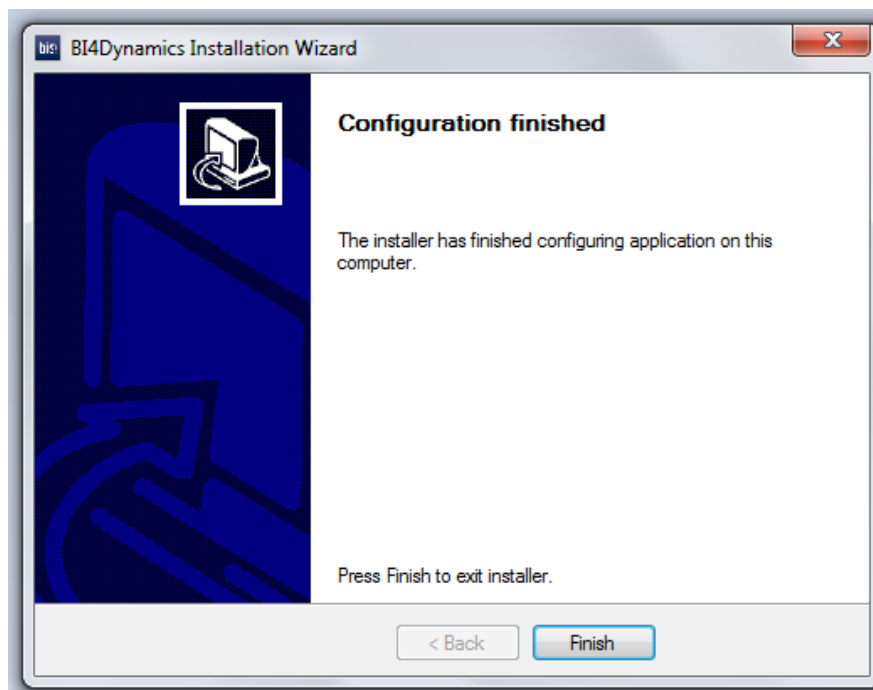
6. Confirm the configuration and begin the installation of BI4Dynamics.



7. Wait until the installation is completed.



8. Click finish after the installation is completed.

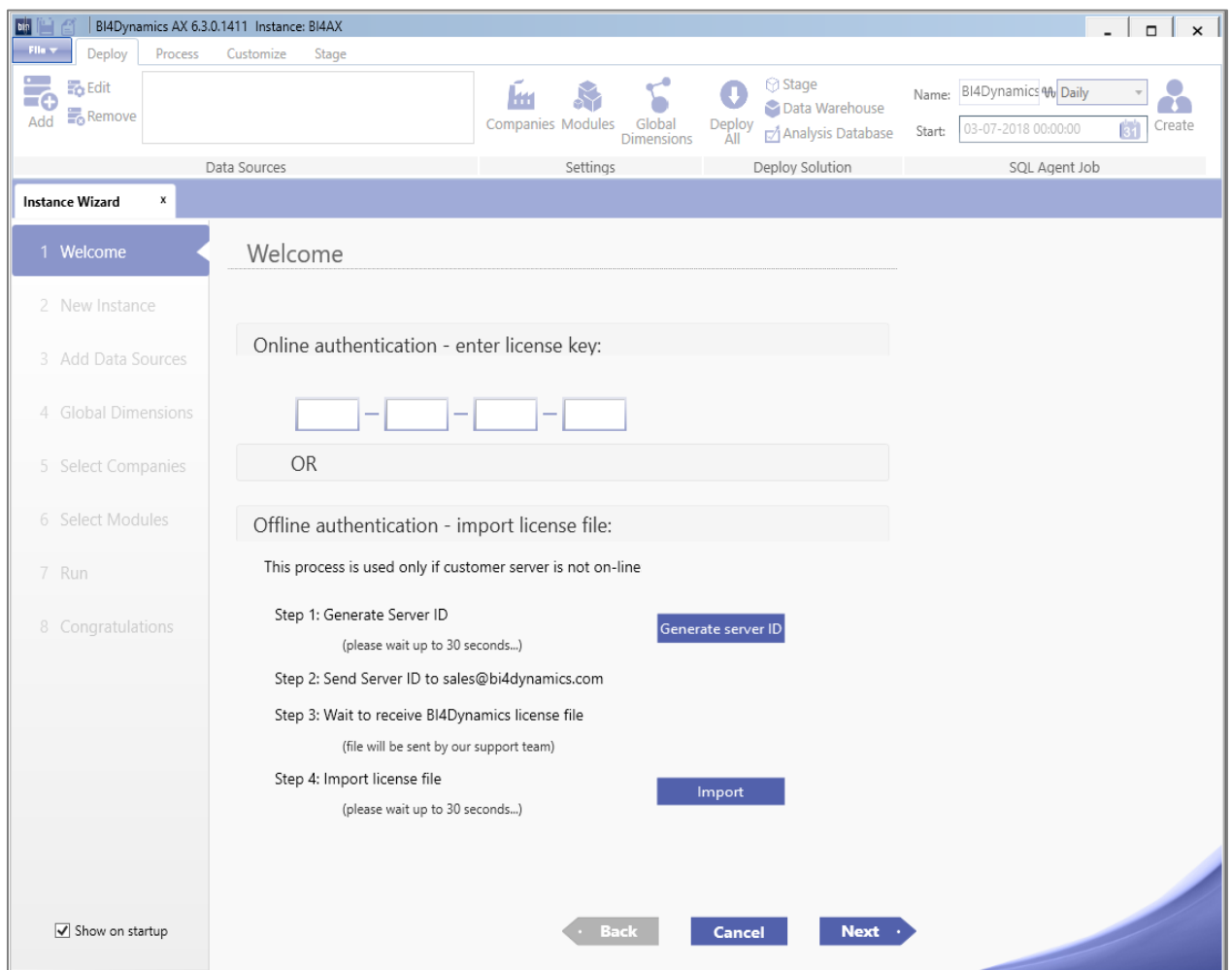


## 2. CREATE A NEW INSTANCE IN BI4DYNAMICS



**IMPORTANT:** BI4Dynamics team can help you with this process. If you need any help, please contact your local BI4Dynamics partner or BI4Dynamics support team at [support@bi4dynamics.com](mailto:support@bi4dynamics.com).

1. Click the Start button. Then type BI4Dynamics > BI4Dynamics AX  
*Note: BI4Dynamics should always run as an administrator.*
2. The Instance Wizard helps you create the instance. Please follow the instructions.  
*Note: If the Instance Wizard doesn't automatically start go to File > New to start the Instance Wizard.*



## Step 1: Enter License

1. First you need to enter your **License Key**. The available modules, the amount of data sources you can add and the amount of companies you can analyze will depend on the license key you will enter. The License Key is not case sensitive.
2. For BI4Dynamics to be able to validate the License Key an internet connection is needed. (Port 80)
3. If the License Key is not accepted and you are certain that you wrote it correctly, please contact your supplier.

*Note: You can also import the Key when you press the Import button.*

## Step 2: New Instance

The screenshot shows the 'Instance Wizard' for BI4Dynamics AX 5.0.0. The current step is 'New Instance'. The wizard is divided into several sections:

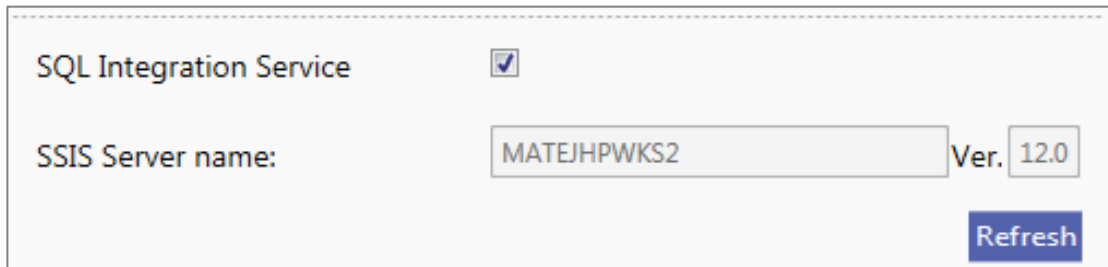
- Instance properties:**
  - Name: [Empty text box]
  - Language: English (United States)
  - SQL Authentication: Windows Authentication
  - SQL Server Instance: [Empty dropdown menu]
  - SQL Database Name: [Empty text box]
  - SQL Analysis Server Name: [Empty dropdown menu]
  - SQL Analysis Database Name: [Empty text box]
- SQL Database File Locations:**
  - Data: C:\Program Files\Microsoft SQL Server\MSSQL
  - Log: C:\Program Files\Microsoft SQL Server\MSSQL
  - SQL Database Collation: SQL\_Latin1\_General\_CP1\_CI\_AI
- SQL Integration Service:** [Checked]
- SSIS Server name:** MATEJHPWKS2 Ver. 12.0

A 'Refresh' button is located at the bottom right of the form.



1. Type the **Name** of the Instance.  
*Note: Use only alphanumeric characters and underscores*
2. Select the **Language** in which the solution will be deployed.
3. Select the **SQL Server Instance** where you want the BI4Dynamics Data Warehouse to be deployed.
4. Type in the **Database Name** of the BI4Dynamics Data Warehouse you would like to deploy  
*Note: Use the same name as the instance, regarding the same rules.*
5. Select the type of **Authentication** you would like to use: Windows or SQL Server (If you choose SQL Server you need to provide a user name and a password).
6. Select the **Analysis Server** where you want the BI4Dynamics OLAP cubes to be deployed.
7. Type in the **Analysis Database Name** you want to use for the BI4Dynamics OLAP cubes.  
*Note: We advise you use the same name as the Database name*
8. Select the **SQL Database Collation** of the BI4Dynamics Data Warehouse.
9. Option to process Data Warehouse using **SQL Server Integration Services**.

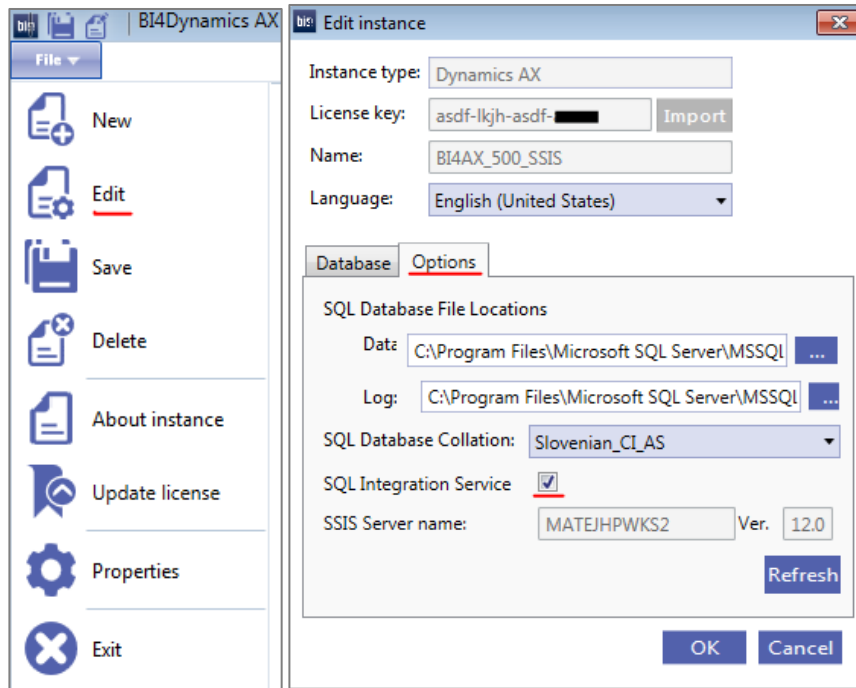
User interface should automatically detect **SSIS** Server name and version



SQL Integration Service

SSIS Server name:  Ver.

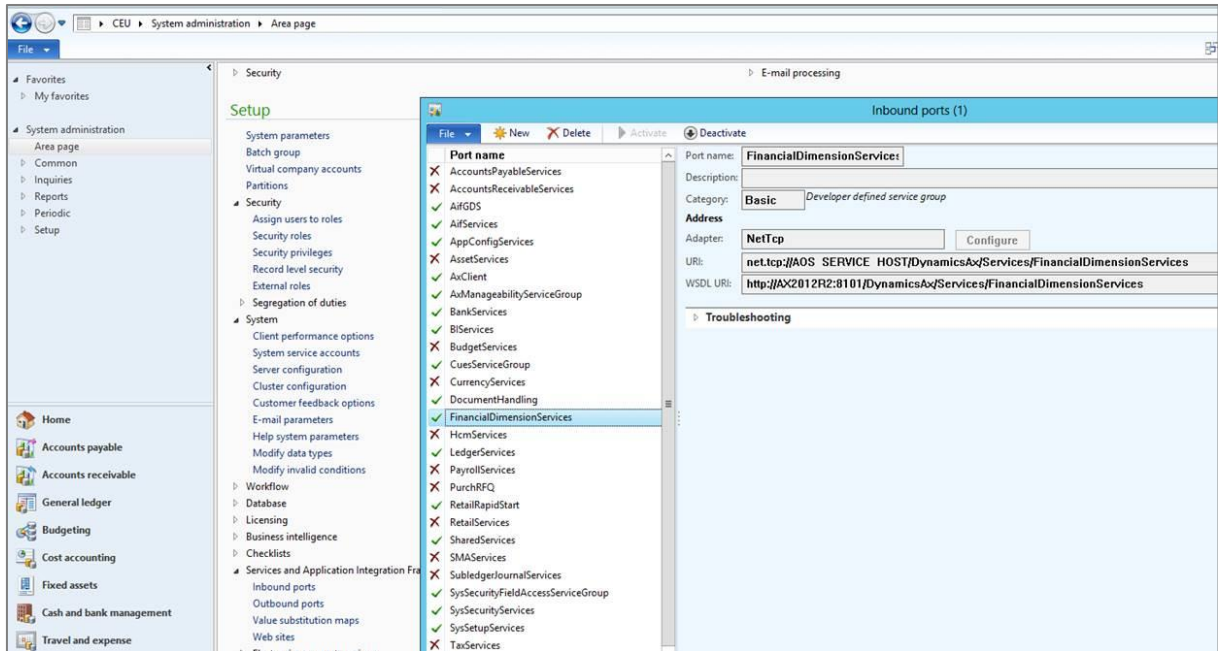
Processing with SQL Server Integration services can always be turned on/off by editing the property in the instance menu (File → Edit → Options)



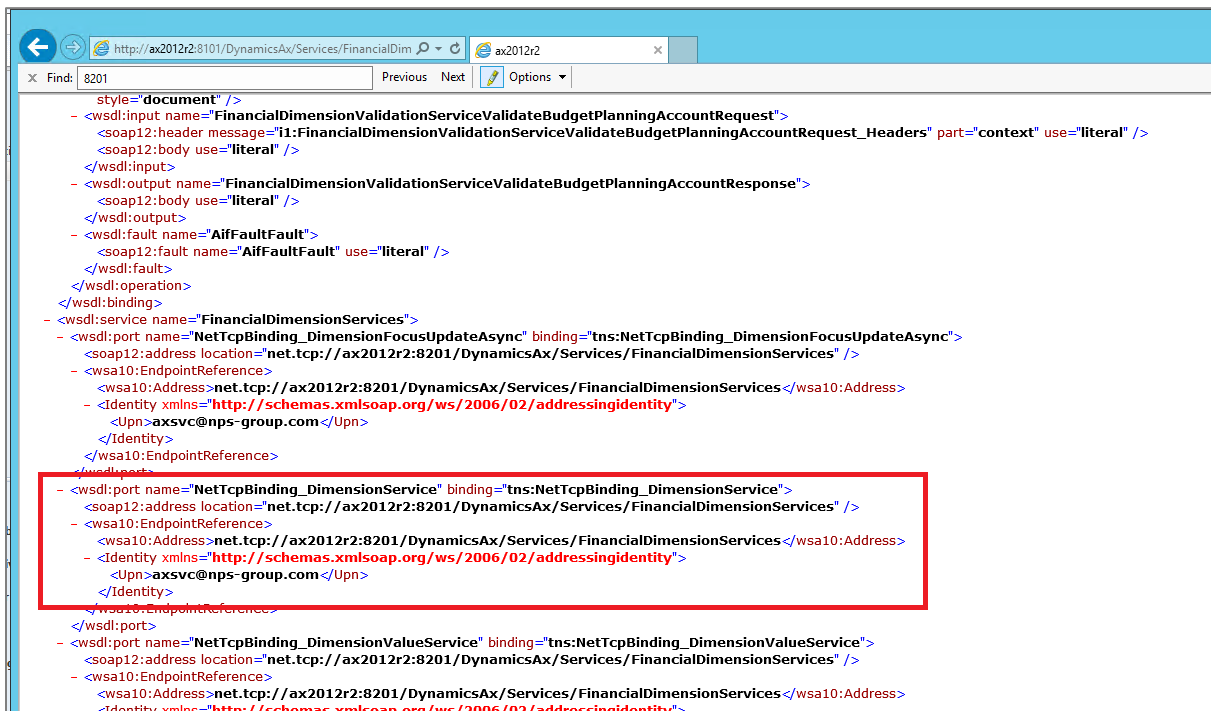
## Step 3: Add Data Sources

The screenshot shows the 'Add Data Sources' step in the BI4Dynamics AX Instance Wizard. The interface is divided into three main sections: 'Data source information', 'AX Connector settings', and 'Authentication'. The 'Data source information' section includes fields for 'Data Source Version' (set to AX 2012R3), 'Data Source SQL Database', 'SQL Server Instance', 'Database Name', and 'Authentication' (set to Windows Authentication). There is also an 'Azure Data source' checkbox and a 'Test connection to Sql Database' button. The 'AX Connector settings' section includes 'AX Services configuration' (set to Windows -> Current user), 'AX Services URL', 'AX Services Port', 'Business connector proxy account', 'Alias', and 'Domain'. There are 'Test connection to AX Services' and 'Setup AX Languages' buttons. At the bottom, there is an 'Add Data Source' button and a 'Data sources' list.

1. Select the **Data Source Version** of the AX database.
2. Select the **SQL Server Instance**, where the AX database is located.
3. Select the **Database Name** of the AX database.
4. Choose **Authentication** type: Windows or SQL Server (with SQL server authentication you also need to provide your user name and password).
5. Check Azure Data Source if you are using **Azure** (hosted service)
6. **Test** the connection to the SQL database. If the connection is not successful you need to change your settings.
7. If your Data Source Version is AX2012 or higher you could connect to AX services and/or Business Connector.



8. Open Microsoft Dynamics AX.
9. Enable (Activate button) the financial dimensions services service and copy the WSDL URL
10. Use the WSDL URL in your browser.



11. Extract the port number and (in address location) and Business Connector account (upn) from the WSD in your browser.

AX Services configuration

AX Services URL

AX Services Port

Business connector proxy account

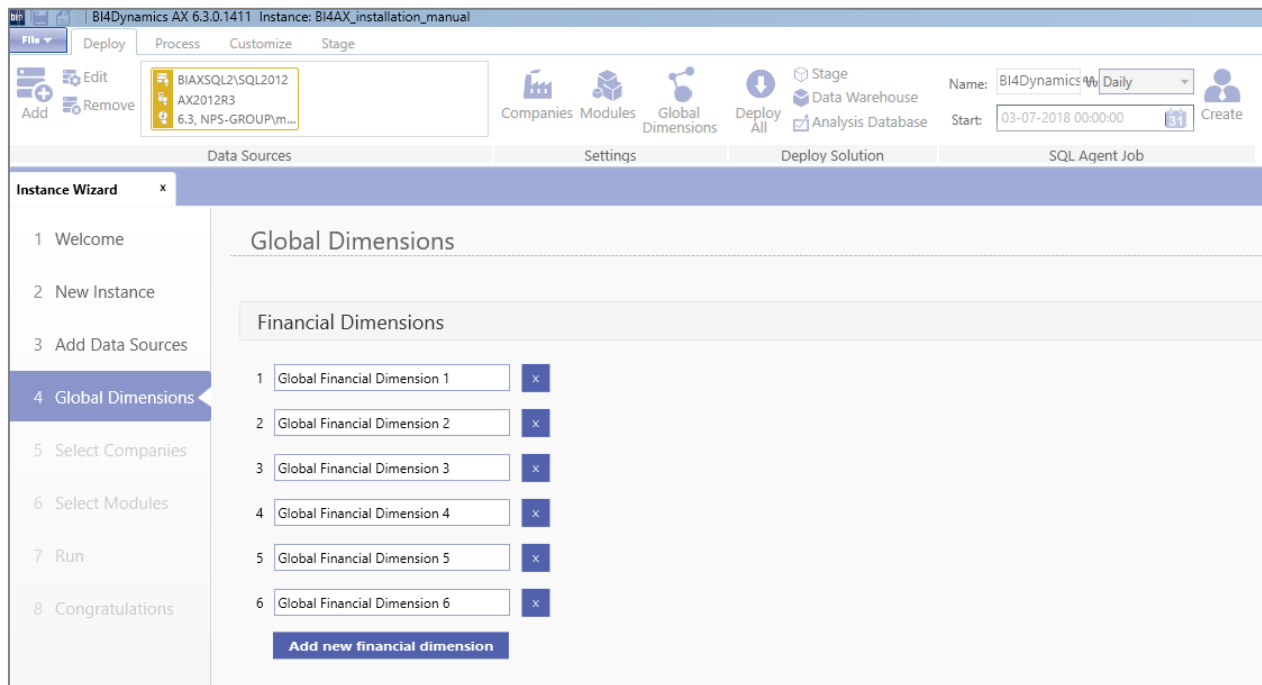
Alias

Domain

**Test connection to AX Services**

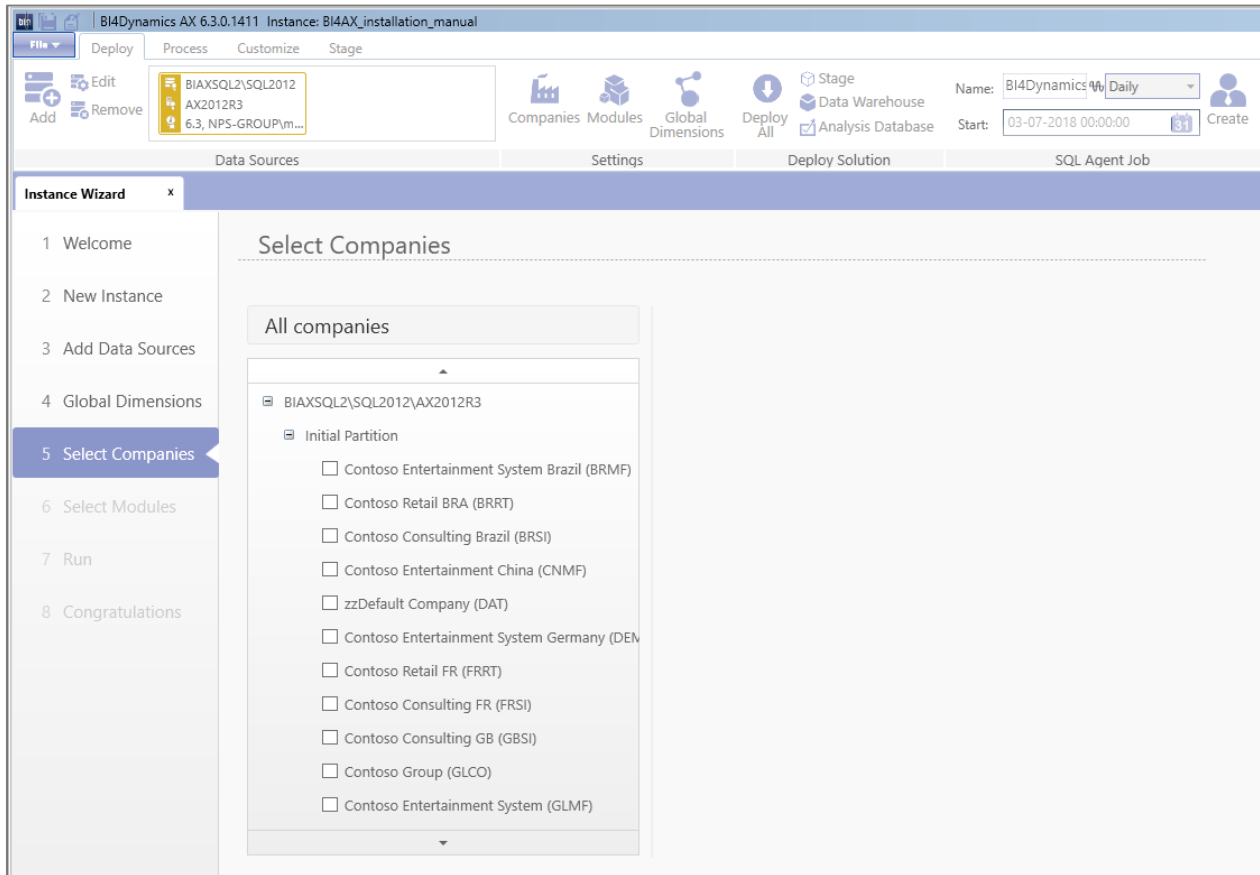
12. Fill in the setting in the settings of the DataSource in BI4Dynamics
13. When finished press the **Add Data Source** button.

## Step 4: Global dimension



1. You can change the Name of the **Global Financial Dimensions**. The name you choose will be the name of the dimension in the Database and in the OLAP Cubes.
2. You can **add** additional Dimensions.
3. You can **delete** Dimensions which are not needed.

## Step 5: Select Companies



1. From the list of companies, **select** the ones you want to include in your instance.
2. Then you need to configure the settings for each selected company.

### Company Configuration

Contoso Entertainment Systems (West)

**Currency Configuration:**

Local Currency:

Additional Currency:

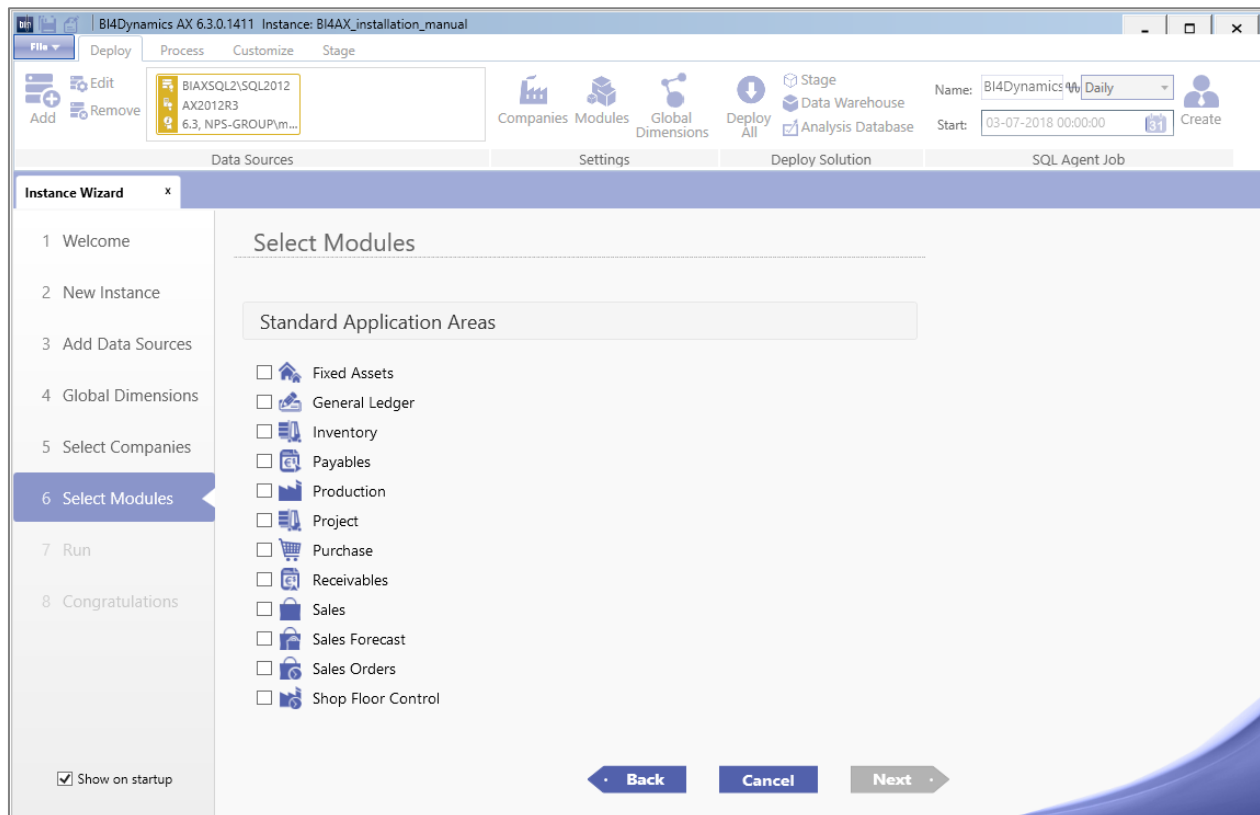
Language ID:

**Financial Dimensions:**

Available financial dimensions:	Map to:	
<input type="text" value="Financial Dimension 1"/>	<input type="text"/>	<input type="button" value="x"/>
<input type="text" value="Financial Dimension 2"/>	<input type="text"/>	<input type="button" value="x"/>
<input type="text" value="Financial Dimension 3"/>	<input type="text"/>	<input type="button" value="x"/>
<input type="text" value="Financial Dimension 4"/>	<input type="text"/>	<input type="button" value="x"/>

3. Select the **Local Currency**. This is the currency that is used by the selected company.
4. Select the **Additional Currency**. This is the currency that is selected by the customer / user.
5. **Language ID which** translates description of the item in dim.Item table
6. **Connect** the Financial Dimension of the selected Company to a Global Financial Dimension that is defined by us.
7. You could **add** an additional dimension or **remove** one. This will not influence the defined Global Dimensions or the Dimensions in the Source Database. If you add additional Dimensions to the Global Dimensions already defined in the previous step these cannot be linked and will be useless.

## Step 6: Select Modules

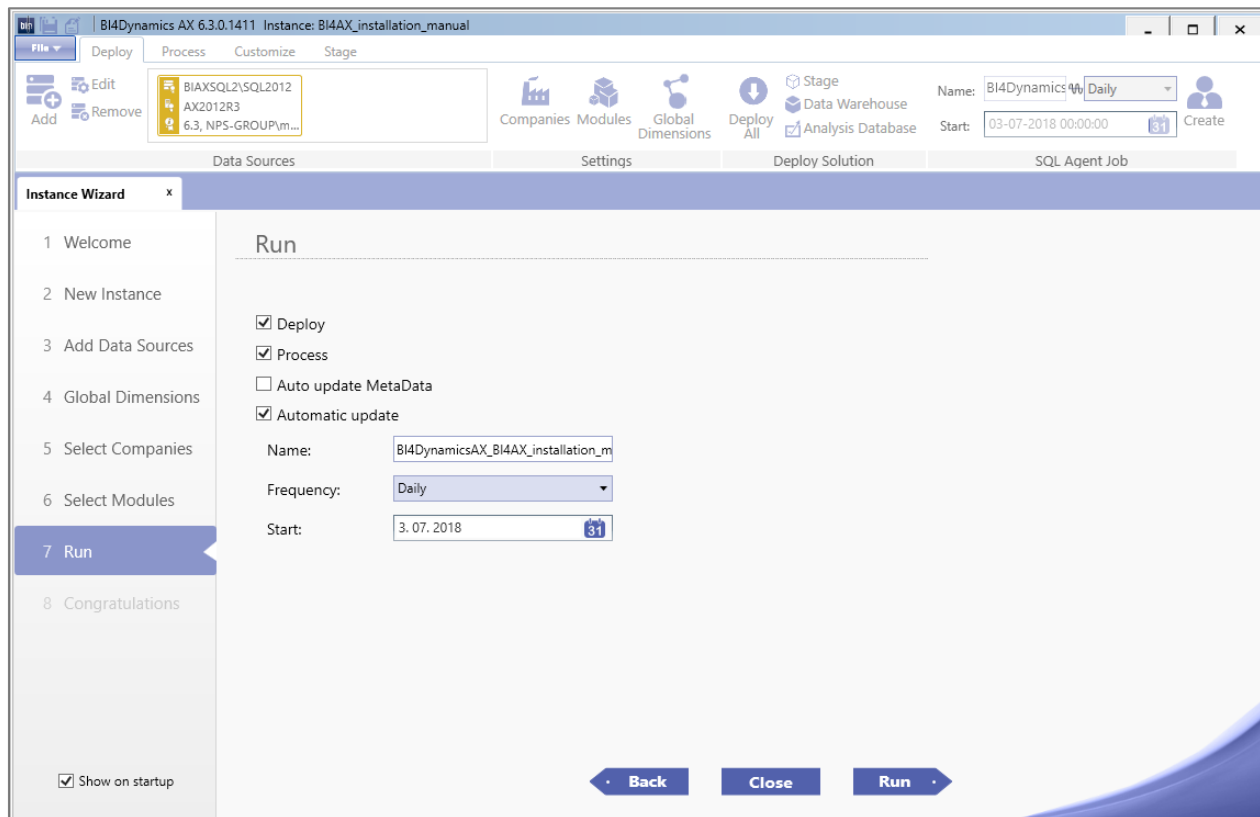


1. **Select** the modules you want to install.
2. The modules that are available depends on the license purchased.

*Note: Click on the name of the module for more information.*

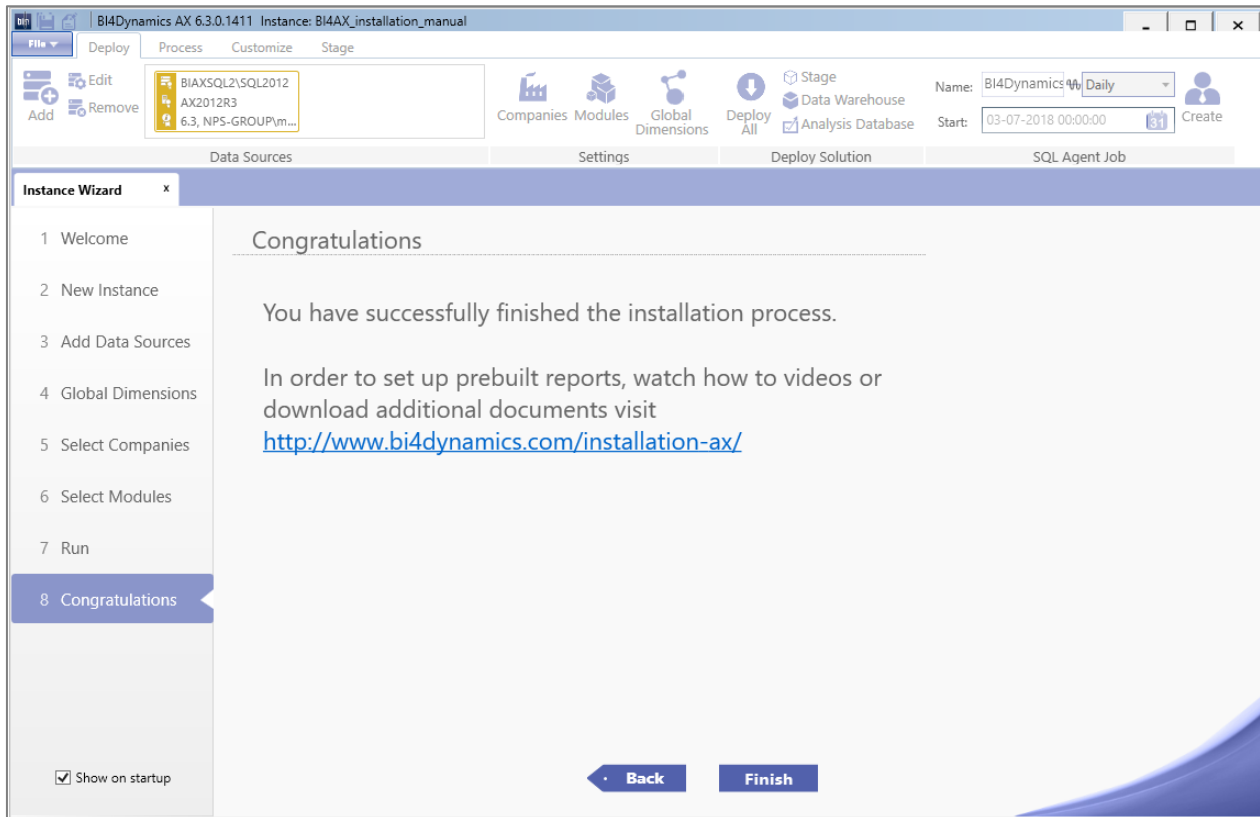


## Step 7: Run



1. Choose Deploy and Process.
2. Type the **name** of the SQL Job.
3. Select the **frequency** of the SQL Job.
4. Select the **start** date of the SQL Job.
5. Click the **run** button.

## Step 8 Completion



The Data Warehouse is successfully deployed and processed.

If you do not need customization, you are now ready to connect the reports to SQL data warehouse or SSAS cubes. If you do need some custom scripts, now is the time to proceed with Customization Manual.