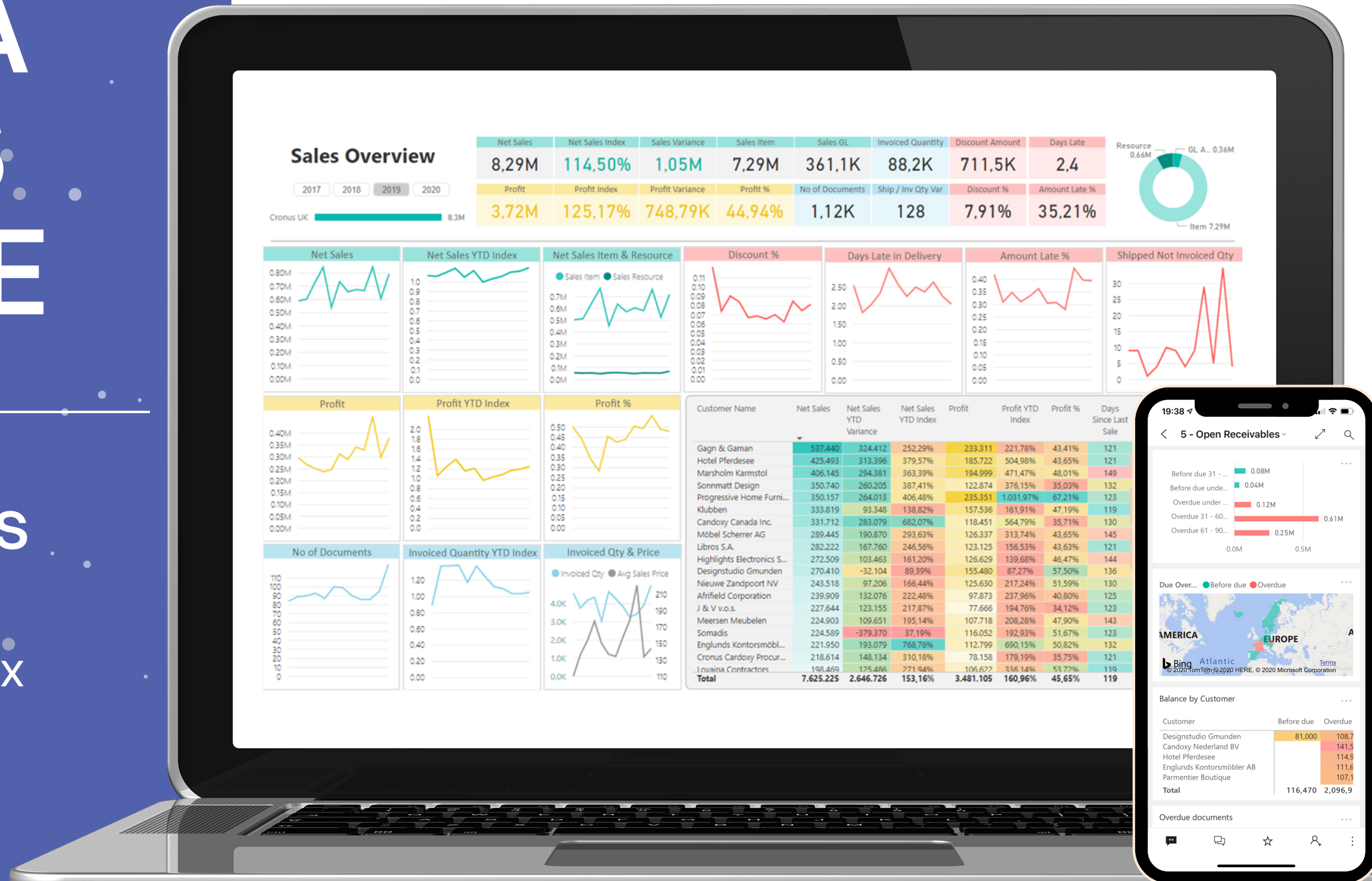


THE NEW ERA OF BUSINESS INTELLIGENCE

For Microsoft Dynamics

365 FINANCE AND OPERATIONS & AX



With 15 years of success serving
over 1000 customers,
BI4Dynamics delivers data warehouse
automation, fast business intelligence,
code-free customizations,
& out-of-the-box **Power BI + Excel**
dashboards to Dynamics users.



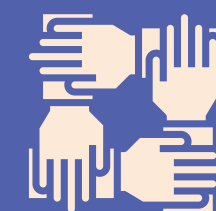
15

Years in Microsoft Dynamics



1000

Customers world-wide



100

Partners in 5 continents

TURN YOUR DYNAMICS DATA INTO POWERFUL INTELLIGENCE

- **Save the time and money** spent creating & maintaining reports.
- **Get setup in less than a day** with a plug-and-play **data warehouse**.
- Enjoy lightning-fast reporting with over **150 Excel and Power BI reports** developed by business leaders.
- Report with **2000 KPI's** and drill down into your data levels till the **document details**.
- **Customize** to your unique needs with an **easy-to-use wizard** – no coding needed.

The best out-of-the box BI solution developed specifically for Microsoft Dynamics.

Complete business intelligence solution ready for use from the first day of deployment.

Unparalleled flexibility that allows your team to take control of your data and intelligence.

GET FINISHED BI PROJECT IN DAYS

With ZERO coding required



No compromises on BI content over performance

BI4Dynamics eliminates the need for developing custom reports in Dynamics or modeling in Power BI. **Automatically generate a data warehouse, analytical model, and project documentation without using a single line of code.**



Code-free customizations based on Metadata

Metadata-based wizard-driven development is simple, accurate, and very fast. Modeling requires Dynamics knowledge (what you want) and not technology skills (how to achieve). **Bring any customization from D365F&O to BI.**



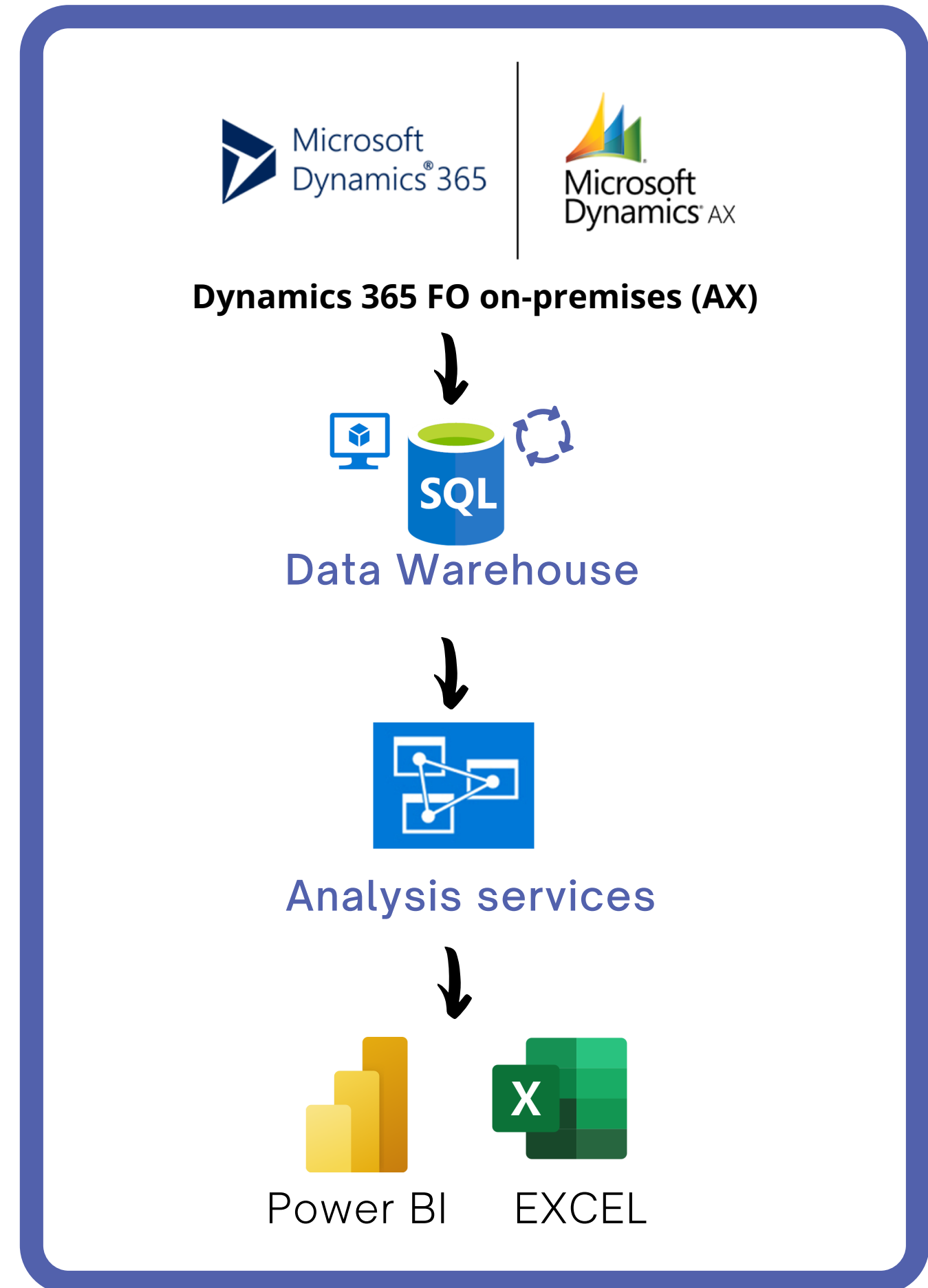
All-inclusive BI within one data warehouse

BI4Dynamics supports adding multiple Dynamics versions, data sources, and companies. Get up to 20 global dimensions across each company, group of companies, or unified over multiple currencies with additional currency for reporting.

THE ARCHITECTURE

That supports
uncompromised
analysis

// BI4DYNAMICS FOR D365 FO ON-PREMISES (AX)



FULLY AUTOMATED PROCESS

WHAT ARE YOU COMPROMISING BY CONNECTING D365F&O DIRECTLY TO POWER BI ?

- **Losing details on a document level** because of aggregations that need to be done in D365F&O to overcome painfully slow connection to the web services.
- **Compromises on rich BI content over implementation costs.** Creating codeunits, pages, and queries to expose them as web services requires IT professionals. Each unforeseen field requires additional services.
- **Performance.** Slow connection is causing **big delays** in querying.
- Analysis is **only possible** in Power BI.

1 Basic BI content

2 Service dense

3 Data size is big issue

4 Querying speed

5 Compromises

THE VALUE OF HAVING SPECIAL DATA LAYERS

between Finance & Operations and Power BI?



No compromises on BI content over services

The data transformation process is fully automated and your objects are created in minutes. Immediately get 2000 BI fields covering all business areas. Perform any customization without a single line of code.



Ready to crunch any data size

Business Central data is incrementally exported to Azure Data Lake and then to Data Warehouse. Any data size can be processed delivering details on document level.



Save money for Azure subscription

BI4Dynamics architecture optimizes the cost of Azure resources and performance. Services used in the Business Intelligence project are chosen wisely and are paused when not in use.



Faster Querying for best user experience

Users can choose Excel or Power BI to query the analysis services model. Data is in memory, so querying is lightning fast. Inviting more users is easy and done by scaling up the Azure Analysis resource within 1 minute.

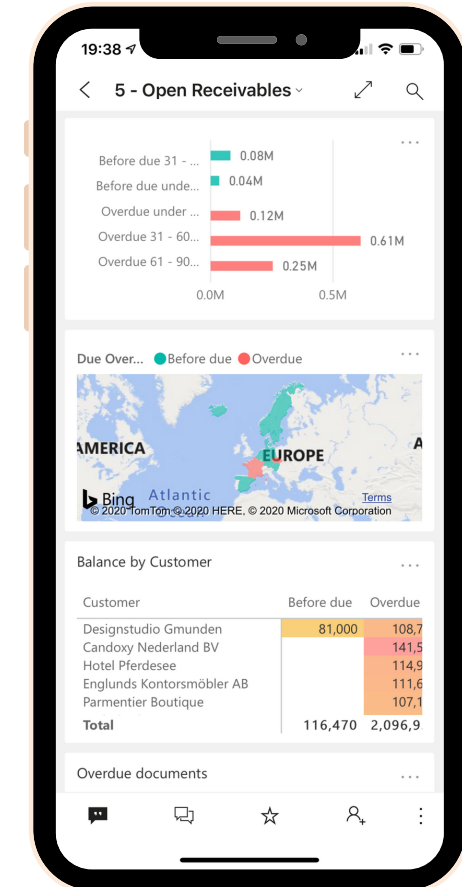
The automated process of building a Business Intelligence solution creates an analytical model with more than **2000 BI fields (KPIs)** that can be easily accessible using predefined **Power BI or Excel dashboards.**

1 million lines of code

185 F&O tables suitable for analytics

2000 BI Fields and KPI's

150 Dashboards



ON DESKTOP AND MOBILE

COVERS ALL F&O AND AX APPLICATION AREAS

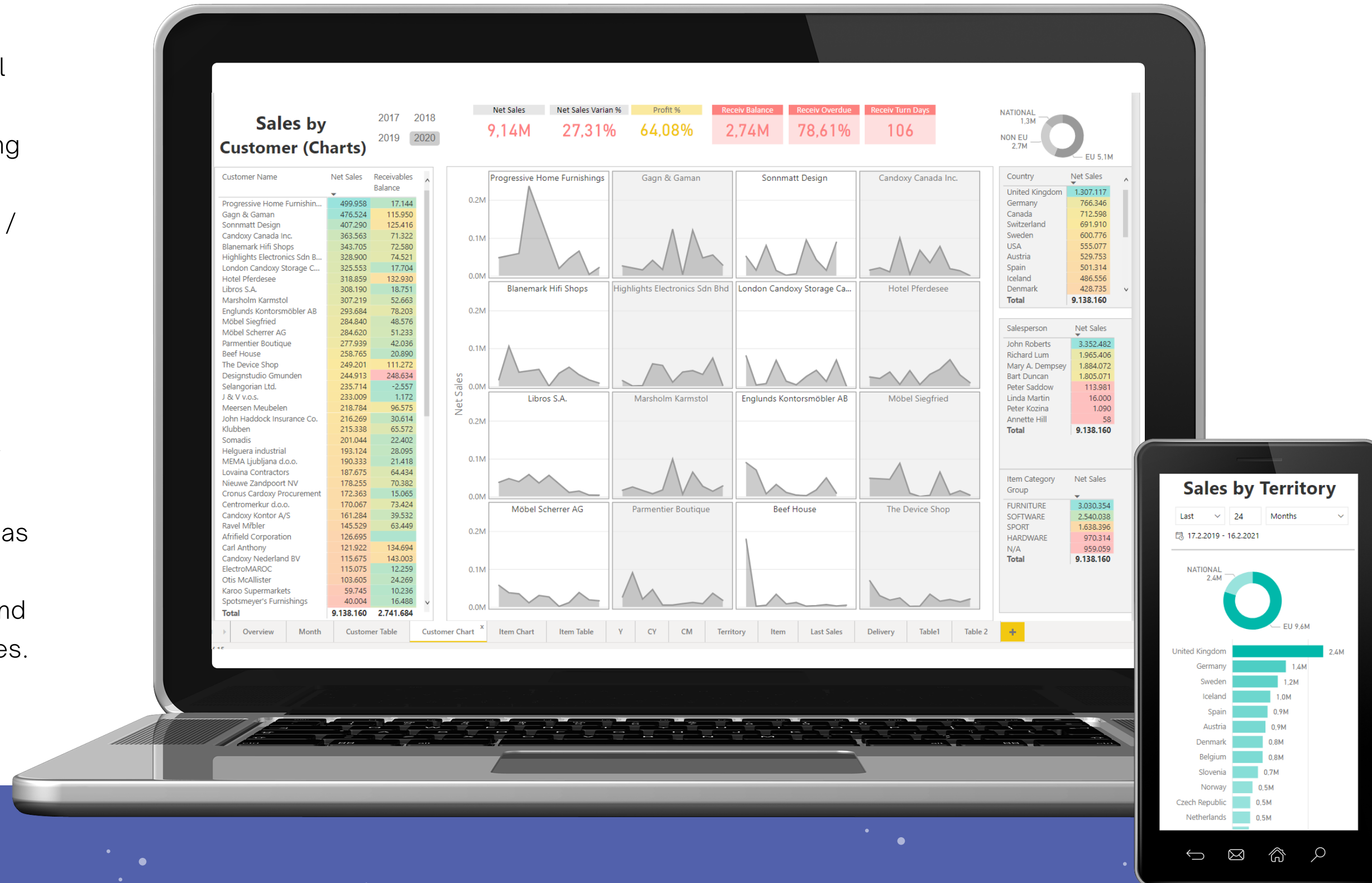
11 areas • 171 dimensions • 2107 measures

Sales, Receivables, Finance with Charts of Accounts,
Inventory, Purchase, Payables, Production, Retail,
Projects, Fixed Assets, Product Information.

Stay on top of your Sales

277 measures and 66 dimensions ensure powerful sales analysis with strongly supported time intelligence (YTD, YoY, PoP, 12 Last months, Rolling 3/6/12) and additional currency for reporting from:

- **Sales Values** - Analyze sales and profit (Gross / Net Sales, Costs, Discounts, Profits, Invoiced quantities, charges, and all averages).
- **Sales Orders** monitor sales operational performance (Ordered / Reserved / Picked / Delivered / Open Amount & Quantity).
- **Sales Delivery** - track delivery performance by Days Late, Amount Late, Qty Late, Lines Late, Amount On-Time, Qty On-Time, Lines On-Time as well as percentages.
- **Sales Forecasts** - Compare sales forecasts and actuals (Net Sales, Qty, and Cost) with variances.
- **Sales Opportunities and Quotes.**



ALL-INCLUSIVE SALES ANALYSIS

Receivables

Receivables are the most standardized business area, and the cube comes with 42 measures organized in two measure groups:

- **Receivables Analysis:** get insight into customer transactions (with standard Debit, Credit, Net change, and Payment terms also as weighted average, and some specific measures Sales on Credit as amount and percentage).
- **Customer Analysis:** Analyze balances that are calculated daily for every open document (Opening, Closing, Average, Due and Overdue, Overdue %). Track customer payment habits starting from Payment Terms to Average Open Days and Average Overdue Days – all 3 measures are calculated as weighted averages giving the most accurate information.

Measure groups are sharing 26 dimensions with 227 attributes in 50 hierarchies.



TRACK CUSTOMERS PAYMENT HABITS

Finance

Finance cube comes with 68 measures organized in three measure groups:

- **General Ledger:** analyze transactions and balances. General
- **Ledger Budget:** analyze budget and budget variances.
- **Financial Statements:** use AX reports from Traditional Financial Statements.

By combining financial dimensions, a user gets unimaginative flexibility for financial reporting in Excel or Power BI.

Measure groups are sharing 29 dimensions with 92 attributes in 11 hierarchies

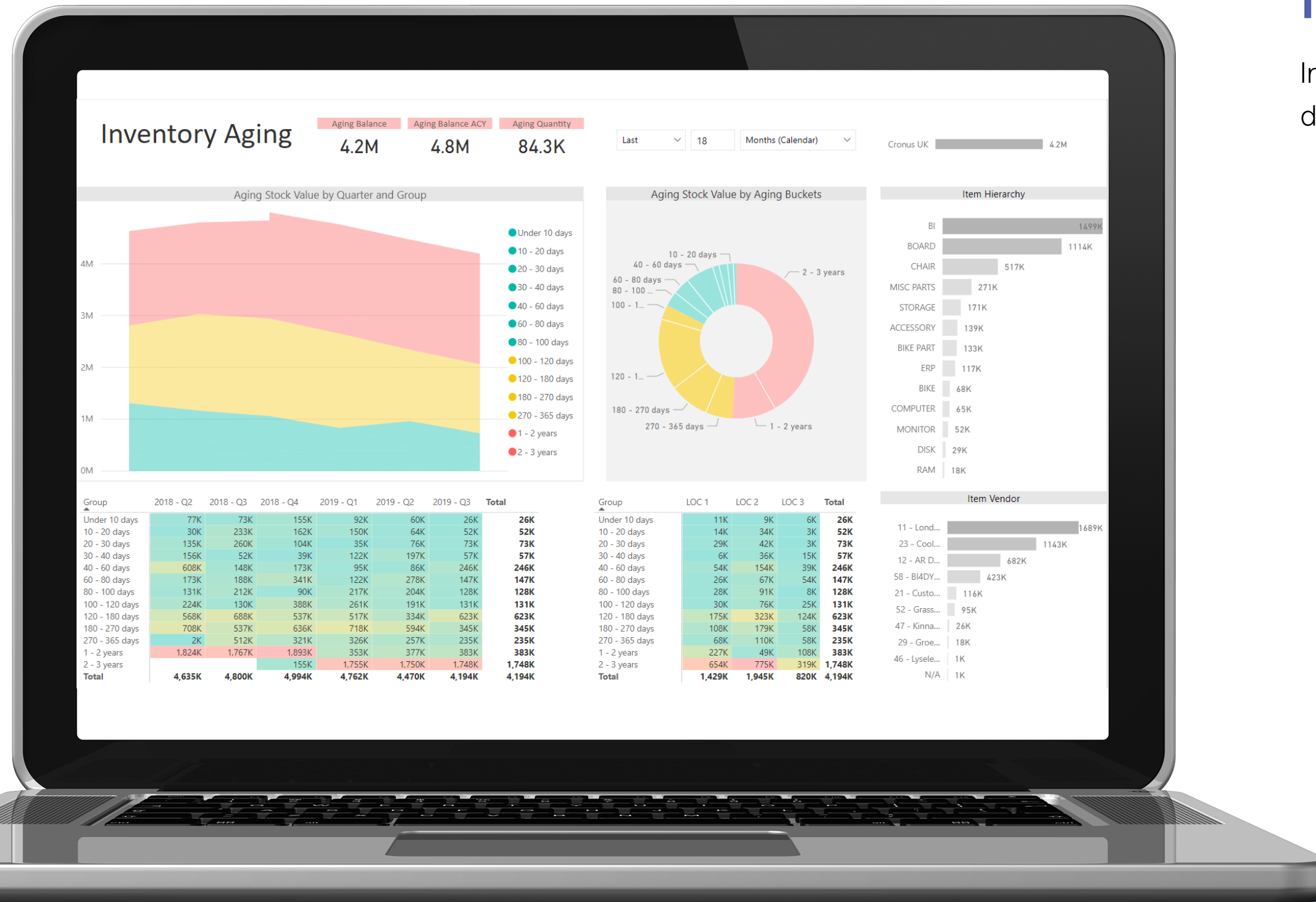


FINANCE WITH 20 GLOBAL DIMENSIONS.

Inventory

Inventory cube comes with 87 measures and 28 dimensions organized in five measure groups:

- **Inventory Transactions:** analyze Cost and Quantity (Issued / Received by Date Physical / Date Financial), adjustments and average costs.
- **Inventory State:** track dynamics of your Inventory (Opening / Closing Qty and Value Balances, Stock Rotation in days, Min / Max Values, Average Qty and Value over time).
- **Inventory Aging:** track aging value and quantity by setting periodical snapshot, save to historical data and analyze changes over time by detailed aging buckets.
- **Inventory Journal:** analyze Cost, Qty and Price of journal transactions (increase, decrease, net change) commonly used for tracking wastage, shrinkage and similar transactions.
- **Inventory Transfers:** analyze transfers between locations.

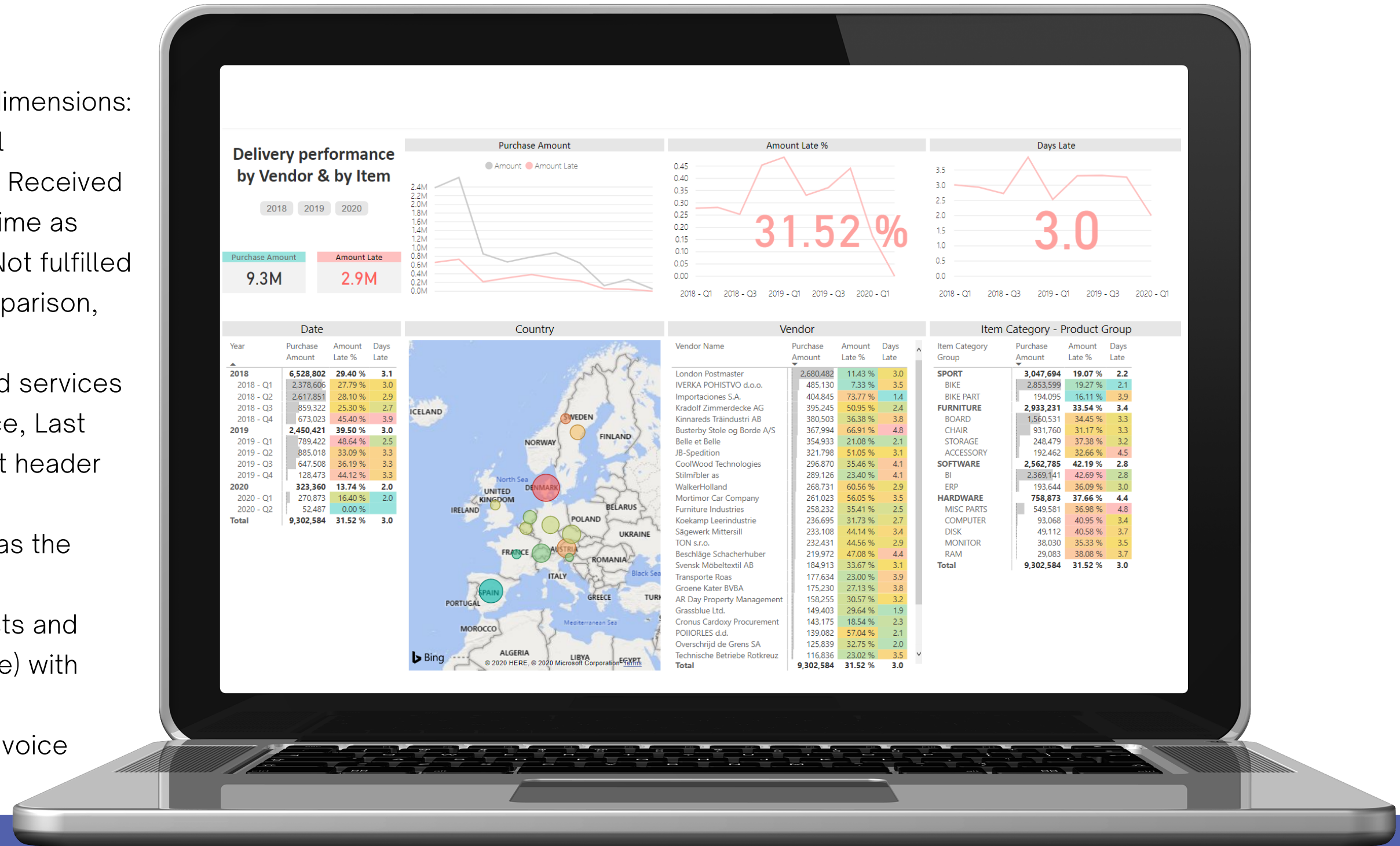


TRACK INVENTORY WITH AGING BUCKETS.

Purchase

Purchase cube comes with 152 measures and 48 dimensions:

- Purchase Orders:** monitor purchase operational performance (Qty Ordered / Arrived / Pending / Received / Remain / Registered, Lines Early / Late / On Time as value and %, Lines fulfilled / Partially fulfilled / Not fulfilled as value and %, Amount Ordered with date comparison, some measures in Unit of Measure).
- Purchase Invoice:** analyze the cost of items and services (Cost amount, Discount, Charges, Quantity, Price, Last purchase transactions) from standard document header and lines or free text documents.
- Purchase Delivery:** score vendor performance as the difference in planned date.
- Purchase Forecast:** compare purchase forecasts and actuals(Forecast Amounts, Qty, Discounts, Price) with variances and date comparisons.
- Purchase Invoice Misc Charges and Purchase Invoice Charges.



SCORE VENDOR DELIVERY PERFORMANCE.

Production

Production cube comes with 36 measures organized in 4 measure groups:

- **Production:** analyze Input, Output, and WIP estimates and actuals with details “from which input products have been produced” or “where (for which item) a consumed material has been used”.
- **Production Center:** information about Work Center (Hours, Qty and Scrap) with details “on which center/route an item has been produced.
- **Production Standard:** Efficiency of Work Center
- **Shop floor control:** Availability, Efficiency, Performance, and OEE.

Measure groups are sharing 34 dimensions with 208 attributes in 37 hierarchies.



ALL ASPECTS OF YOUR PRODUCTION.

Retail

Retail cube comes with 330 measures with well-supported time intelligence with Daily / Weekly / Monthly Sales and many variances (YTD, MTD, WTD, YoY, and PoP) of base measures and additional currency for the reporting.

- **POS Sales:** Analyze Gross / Net Sales (per Line, M2, Item, Staff, Store, and Terminal), Profit and Qty, Basket Value, Store Size, Returns, Tax, and Discounts.
- **POS Payments:** Analyze payment habits (Net Amount, Average Payment) by Tender Type, Card down to payment line.
- **POS Batch:** Analyze POS events (durations, logons, returns, voids, transactions, returns)
- **POS Vouchers:** Analyze Open amount, Net amount, and Applied amount by Created, Applied, and Expired Date of Vouchers.
- **Retail Store Information:** Track Store Area M2 (from store information or from store sections) that is used for calculation of averages in other measure groups



A RETAILER'S ANALYSIS HEAVEN.

RISK-FREE IMPLEMENTATION IN A COUPLE OF DAYS

Free trial experience for 30 days

#1

Guided
installation

We will install BI4Dynamics with all out-of-the-box content in just a few hours.



#2

Power bi
& Excel

And connect 150 predefined Power BI and Excel reports available for desktop and mobile.



#3

Get
insights

Feel the power of ready-to-use BI solutions and make a fully informed decision.



#4

Defining
gap

BI4Dynamics supports 80% of customer requirements. Gap is covered using the wizard.



#5

Risk-free
Decision

Risk-free decision after 30 days of exploring your data on a fully running version of BI4Dynamics



THE NEW ERA OF BUSINESS INTELLIGENCE

Get Started Today.

www.bi4dynamics.com
sales@bi4dynamics.com

