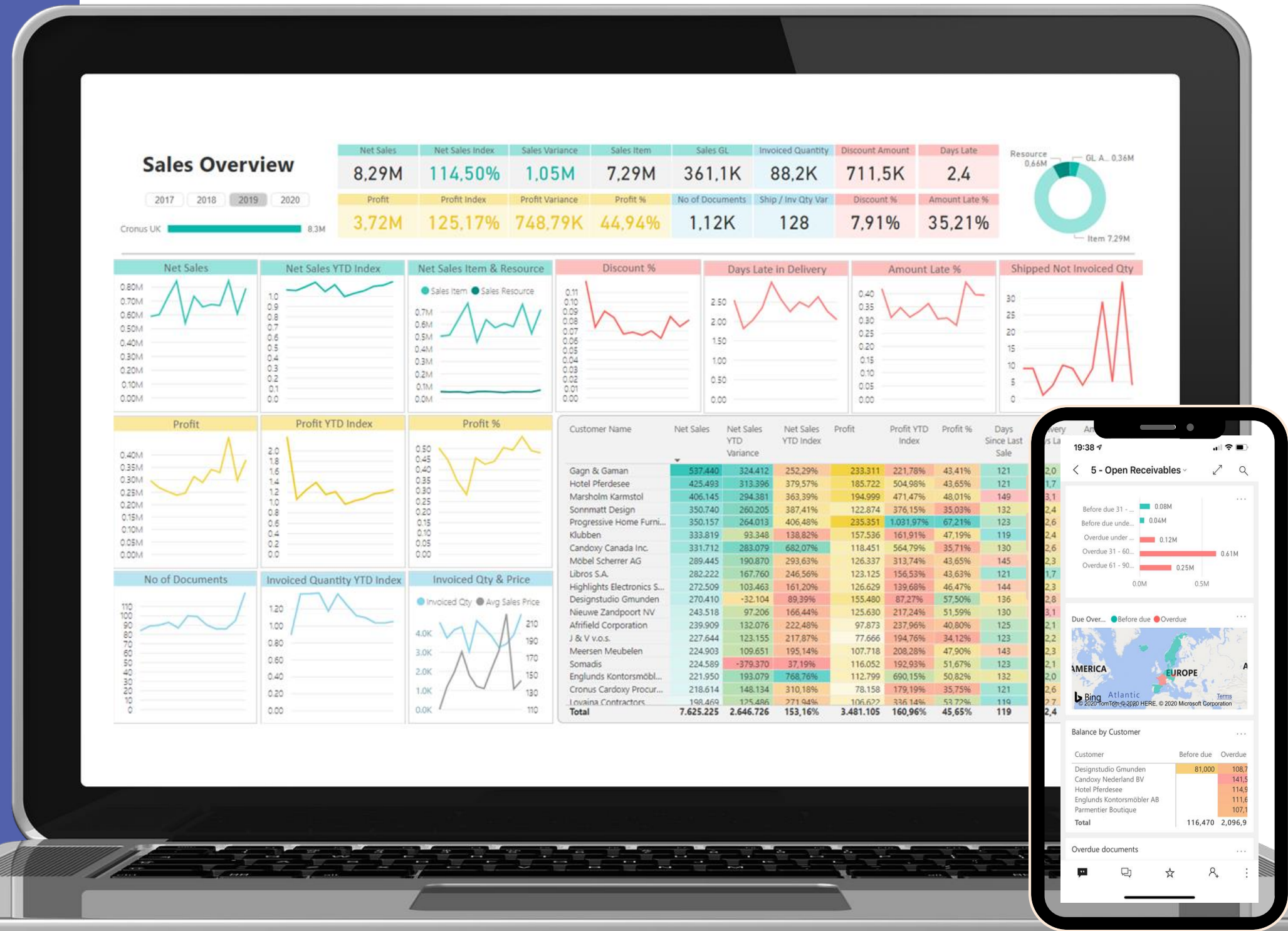


THE NEW ERA OF BUSINESS INTELLIGENCE

For Microsoft Dynamics

365 BUSINESS CENTRAL & NAV



With 15 years of success serving
over 1000 customers,
BI4Dynamics delivers data warehouse
automation, fast business intelligence,
code-free customizations,
& out-of-the-box **Power BI + Excel**
dashboards to Dynamics users.



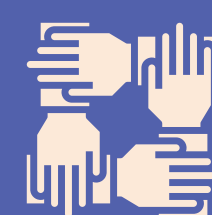
15

Years in Microsoft Dynamics



1000

Customers world-wide



100

Partners in 5 continents

TURN YOUR DYNAMICS DATA INTO POWERFUL INTELLIGENCE

- **Save the time and money** spent creating & maintaining reports.
- **Get setup in less than a day** with a plug-and-play **data warehouse**.
- Enjoy lightning-fast reporting with over **150 Excel and Power BI reports** developed by business leaders.
- Report with **1500 KPI's** and drill down into your data levels till the **document details**.
- **Customize** to your unique needs with an **easy-to-use wizard** – no coding needed.

The best out-of-the box BI solution developed specifically for Microsoft Dynamics.

Complete business intelligence solution ready for use from the first day of deployment.

Unparalleled flexibility that allows your team to take control of your data and intelligence.

GET FINISHED BI PROJECT IN DAYS

With ZERO coding required



No compromises on BI content over performance

BI4Dynamics eliminates the need for developing custom reports in Dynamics or modeling in Power BI. **Automatically generate a data warehouse, analytical model, and project documentation without using a single line of code.**



Code-free customizations based on Metadata

Metadata-based wizard-driven development is simple, accurate, and very fast. Modeling requires Dynamics knowledge (what you want) and not technology skills (how to achieve). **Bring any customization from Extensions in BC.**



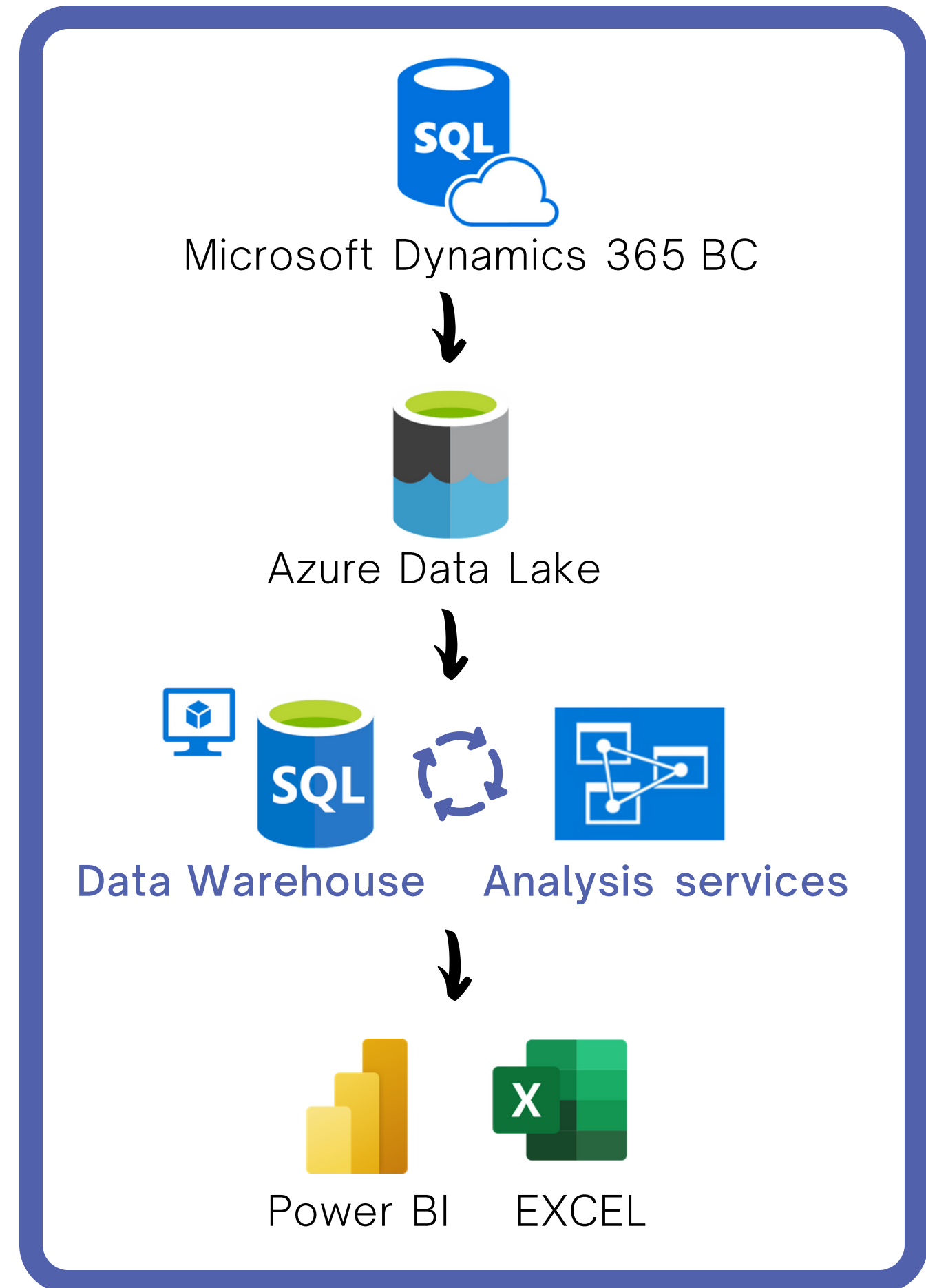
All-inclusive BI within one data warehouse

BI4Dynamics supports adding multiple Dynamics versions, data sources, and companies. Get up to 20 global dimensions across each company, group of companies, or unified over multiple currencies with additional currency for reporting.

THE ARCHITECTURE

That supports
uncompromised
analysis

// CLOUD ARCHITECTURE FOR
BI4DYNAMICS D365 CLOUD



FULLY AUTOMATED PROCESS

WHAT ARE YOU COMPROMISING BY CONNECTING BUSINESS CENTRAL DIRECTLY TO POWER BI ?

- **Losing details on a document level** because of aggregations that need to be done in D365 BC to overcome painfully slow connection to the web services.
- **Compromises on rich BI content over implementation costs.** Creating codeunits, pages, and queries to expose them as web services requires IT professionals. Each unforeseen field requires additional services.
- **Performance.** Slow connection is causing **big delays** in querying.
- Analysis is **only possible in Power BI.**

1 Basic BI content

2 Service dense

3 Data size is big issue

4 Querying speed

5 Compromises

THE VALUE OF HAVING SPECIAL DATA LAYERS

between Business Central and Power BI?



No compromises on BI content over services

The data transformation process is fully automated and your objects are created in minutes. Immediately get 1500 BI fields covering all business areas. Perform any customization without a single line of code.



Ready to crunch any data size

Business Central data is incrementally exported to Azure Data Lake and then to Data Warehouse. Any data size can be processed delivering details on document level.



Save money for Azure subscription

BI4Dynamics architecture optimizes the cost of Azure resources and performance. Services used in the Business Intelligence project are chosen wisely and are paused when not in use.



Faster Querying for best user experience

Users can choose Excel or Power BI to query the analysis services model. Data is in memory, so querying is lightning fast. Inviting more users is easy and done by scaling up the Azure Analysis resource within 1 minute.

The automated process of building a Business Intelligence solution creates an analytical model with more than **1500 BI fields (KPIs)** that can be easily accessible using predefined **Power BI or Excel dashboards.**

1 million lines of code

179 BC tables suitable for analytics

1500 BI Fields and KPI's

150 Dashboards

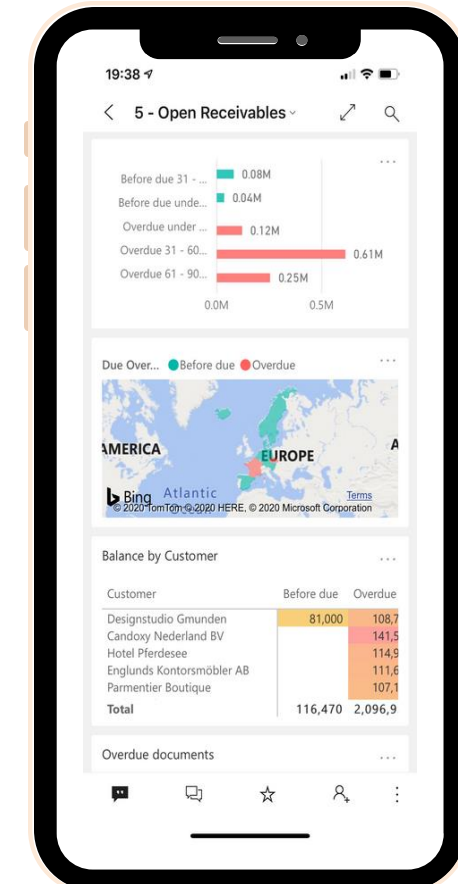
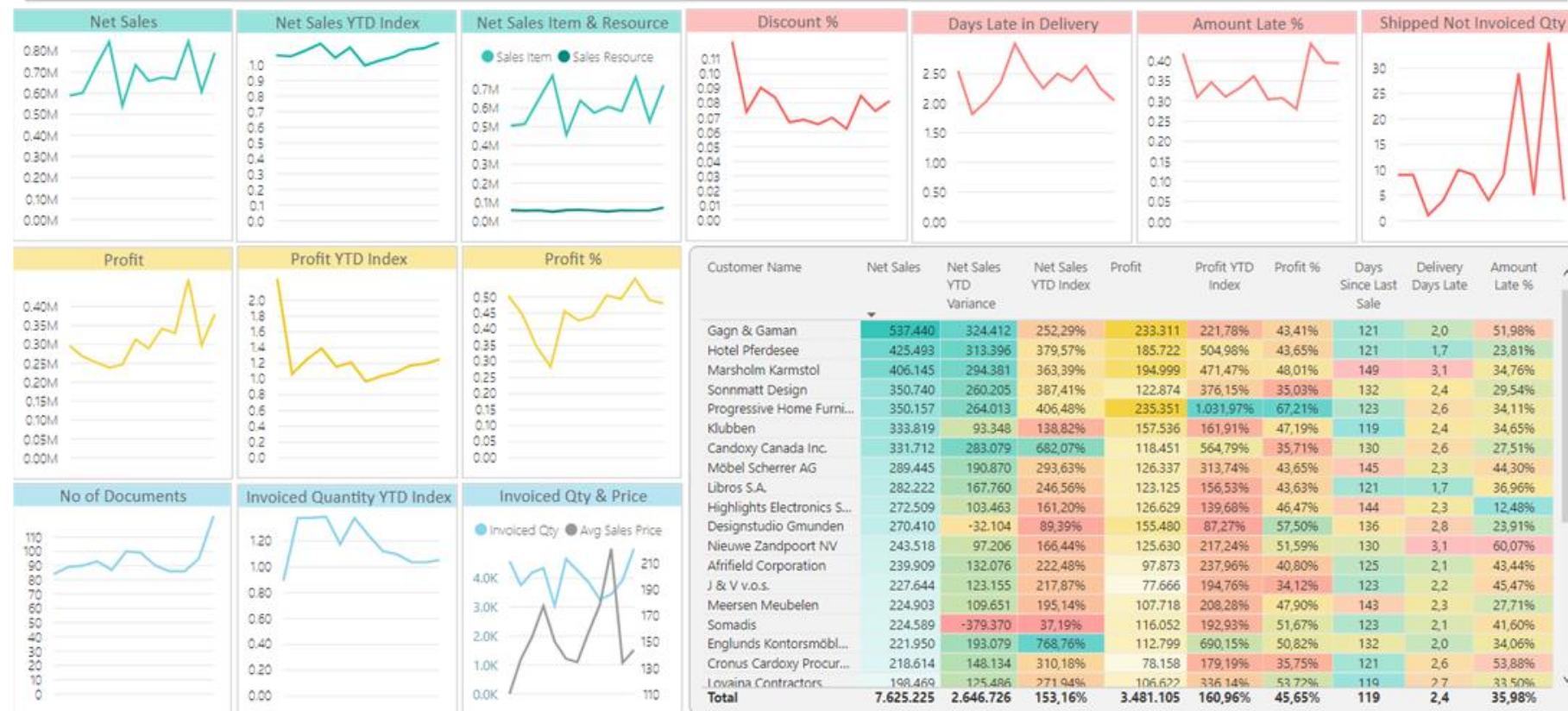


Sales Overview

2017 2018 2019 2020

Cronus UK 8.3M

Net Sales	Net Sales Index	Sales Variance	Sales Item	Sales GL	Invoiced Quantity	Discount Amount	Days Late
8,29M	114,50%	1,05M	7,29M	361,1K	88,2K	711,5K	2,4
Profit	Profit Index	Profit Variance	Profit %	No of Documents	Ship / Inv Qty Var	Discount %	Amount Late %
3,72M	125,17%	748,79K	44,94%	1,12K	128	7,91%	35,21%



ON DESKTOP AND MOBILE

COVERS ALL BC & NAV APPLICATION AREAS

14 areas • 147 dimensions • 1507 measures

Sales, Receivables, Finance with Account Schedules,
Inventory, Purchase, Payables, Manufacturing, Retail,
Projects, Fixed Assets, Employee,
Warehouse, Item Information, Services

Stay on top of your Sales

253 measures and 42 dimensions ensure powerful sales analysis with strongly supported time intelligence (YTD, YoY, PoP, 12 Last months, Rolling 3/6/12) and additional currency for reporting from:

- **Sales Values** - Analyze sales and profit (Gross / Net Sales, Costs, Discounts, Profits, Invoiced quantities, charges, and all averages).
- **Sales Orders & Archive** by any measure or dimension available in Sales Header or Sales Line.
- **Sales Delivery** - track delivery performance by Days Late, Amount Late, Qty Late, Lines Late, Amount On-Time, Qty On-Time, Lines On-Time as well as percentages.
- **Sales Budgets** - Compare sales budgets, actuals, and variances (Net Sales, Qty, and Cost) with comparisons.
- **Sales Quantities:** Analyze Shipped Quantities and verify that all shipped is also invoiced.



ALL-INCLUSIVE SALES ANALYSIS

Receivables

Receivables are the most standardized business area, and the cube comes with 40 measures organized in two measure groups:

- **Receivables Transactions:** get insight into customer transactions (with standard Debit, Credit, Net change, and Payment terms also as weighted average, and some specific measures Sales on Credit as amount and percentage).
- **Receivables State:** Analyze balances that are calculated daily for every open document (Opening, Closing, Average, Due and Overdue, Overdue %). Track customer payment habits starting from Payment Terms to Average Open Days and Average Overdue Days – all 3 measures are calculated as weighted averages giving the most accurate information.

Measure groups are sharing 9 dimensions with 227 attributes in 34 hierarchies.



TRACK CUSTOMERS PAYMENT HABITS

Finance

Finance cube comes with 22 dimensions and 179 measures organized in six measure groups:

- **Account Schedules:** Transform static Account Schedules from BC to BI, combine it with any standard BI dimension or any 20 global BC dimension, and get unimaginative flexibility for financial reporting in Excel or Power BI.
- **GL Analysis:** Analyze GL transactions and balances in local currency as well as additional currency for reporting (ACY) for consolidation.
- **GL Budget:** Analyze GL budget and budget variances with well-supported time intelligence and comparisons.
- **Cost Accounting:** Top-bottom analysis of Cost Entries as allocated GL transactions by Account Schedules or Cost Center hierarchy. All details exposed.
- **Cash Flow:** analyze Cash flow (standard BC module) by Source Type, Account and track it down to Forecast document level.



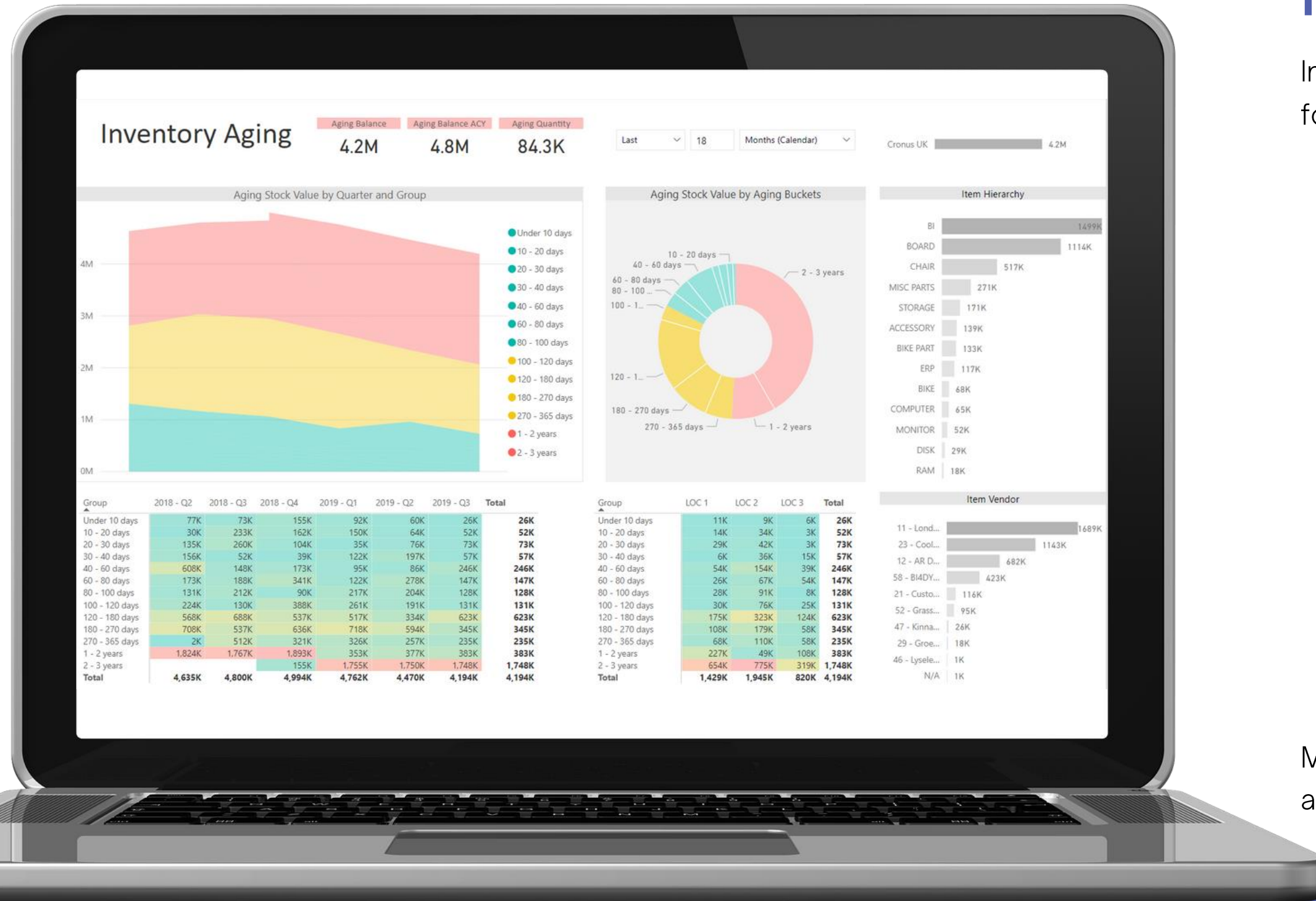
ACCOUNT SCHEDULES WITH 20 GLOBAL DIMENSIONS.

Inventory

Inventory cube comes with 124 measures organized in four-measure groups:

- **Inventory Invoiced Transactions:** analyze Cost and Quantity (Amount, Increase, Decrease) by Entry type (in multiple variants of measure), Average costs, and Expected values (Posted to GL or Inventory Cost). **Inventory Shipped Transactions:** analyze Cost and Quantity.
- **Inventory State:** track dynamics of your Inventory (Opening / Closing Qty and Balance, Stock Rotation in days, Min / Max Values, Average Qty and Value over time).
- **Inventory Aging:** track Aging value and quantity from first BC transactions with all changes over time by detailed aging buckets.

Measure groups are sharing 18 dimensions with 174 attributes in 16 hierarchies.

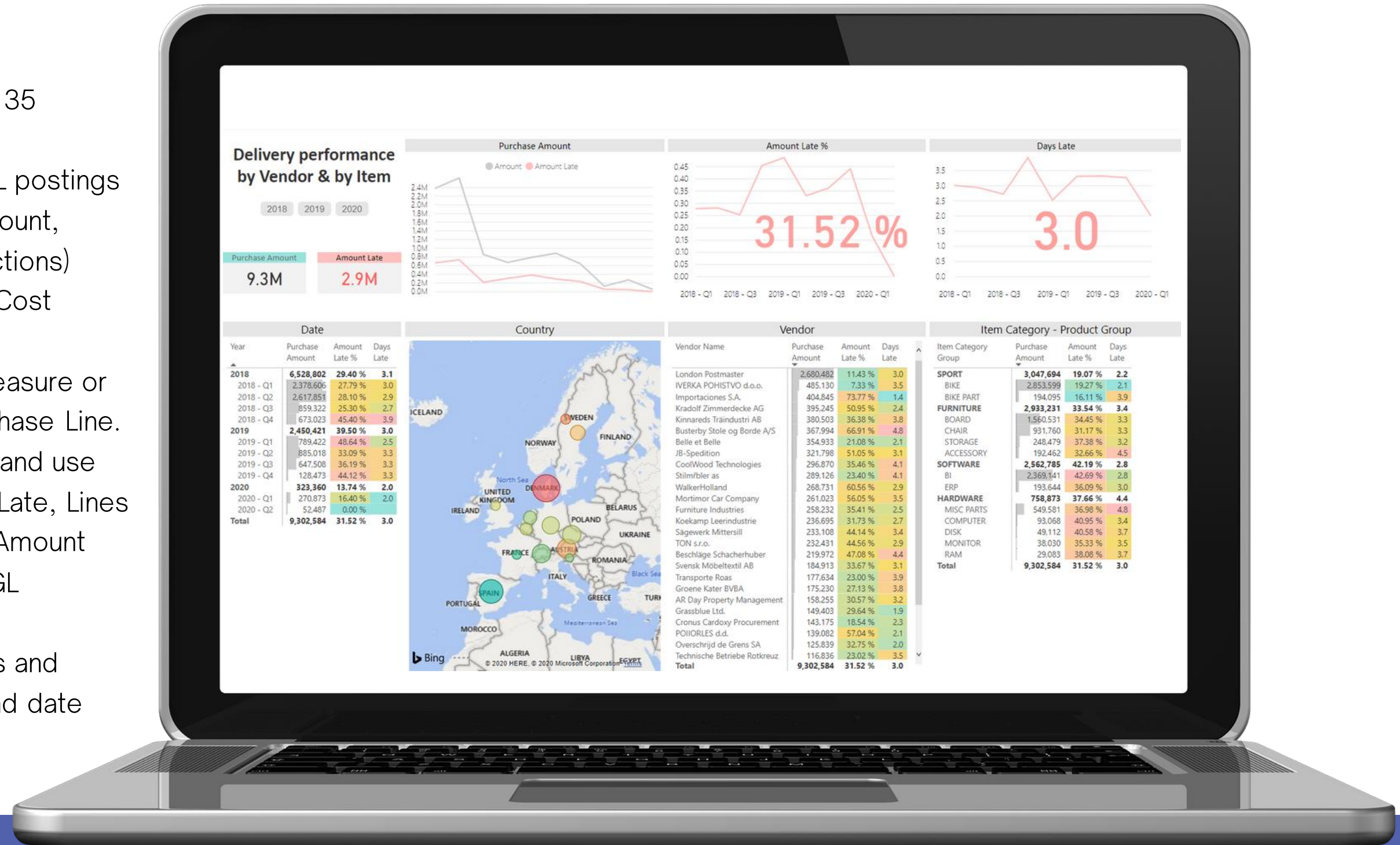


TRACK INVENTORY WITH AGING BUCKETS.

Purchase

The purchase model comes with 84 measures and 35 dimensions with 429 attributes in 65 hierarchies.

- **Purchase Values:** Analyze the cost of Items, GL postings (services), Charges, and Fixed Assets (Cost amount, Discount, Quantity, Price, Last purchase transactions) from standard invoiced transactions as well as Cost Amount Expected.
- **Purchase Orders & Archive:** Analyze by any measure or dimension available in Purchase Header or Purchase Line.
- **Purchase Delivery:** Score vendor performance and use information that your vendors don't have. Lines Late, Lines Late %, Qty Late, Qty Late & and Amount Late, Amount Late % for everything that you purchase (Item, GL services, Fixed Assets).
- **Purchase Budgets:** Compare purchase budgets and actuals (Budget Cost and Qty) with variances and date comparisons.



SCORE VENDOR DELIVERY PERFORMANCE.

Manufacturing

The manufacturing model comes with 36 measures, 19 dimensions organized in four measure groups:

- **Manufacturing:** Analyze Input, Output, and Work-in-progress of quantities and values across items and capacities. Find out how you produced over time. Where and which items have been consumed as a material or capacity for possible cost control or product recall.
- **Manufacturing Expected:** Compare expected values (before starting Production Order) with actuals and for costs and quantities at any level of the production process and improve production BOM.
- **Capacity Calendar:** Analyze capacity, actuals, and variance of Work Centers (people, machines) group by any BC attribute.
- **Capacity Times:** Run, Setup and Stop Time, also available as percentages.

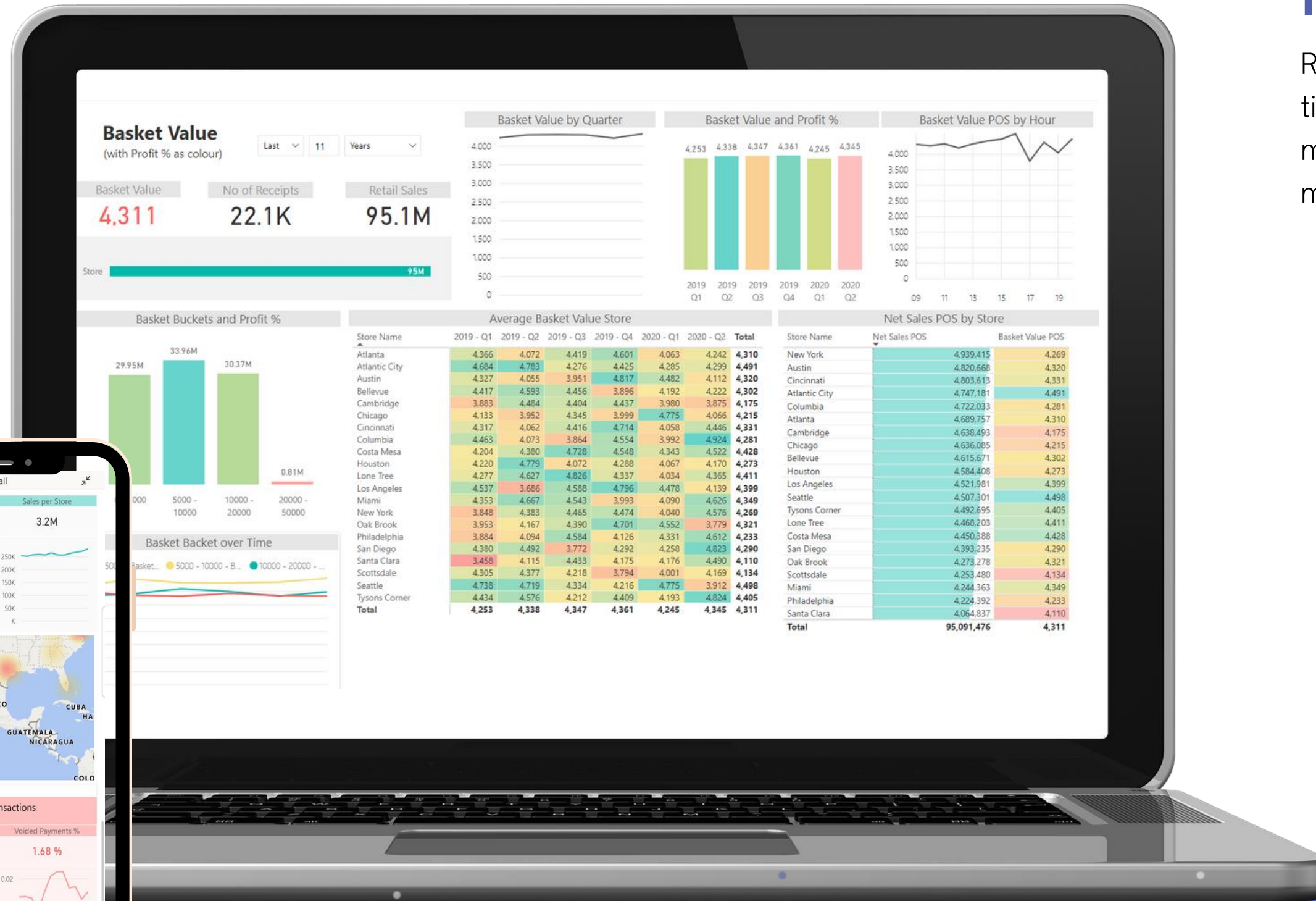


ALL ASPECTS OF YOUR MANUFACTURING.

Retail

Retail cube comes with 330 measures with well-supported time intelligence with Daily / Weekly / Monthly Sales and many variances (YTD, MTD, WTD, YoY, and PoP) of base measures and additional currency for the reporting.

- **POS Sales:** Analyze Gross / Net Sales (per Line, M2, Item, Staff, Store, and Terminal), Profit and Qty, Basket Value, Store Size, Returns, Tax, and Discounts.
- **POS Payments:** Analyze payment habits (Net Amount, Average Payment) by Tender Type, Card down to payment line.
- **POS Batch:** Analyze POS events (durations, logons, returns, voids, transactions, returns)
- **POS Vouchers:** Analyze Open amount, Net amount, and Applied amount by Created, Applied, and Expired Date of Vouchers.
- **Retail Store Information:** Track Store Area M2 (from store information or from store sections) that is used for calculation of averages in other measure groups



A RETAILER'S ANALYSIS HEAVEN.

RISK-FREE IMPLEMENTATION IN A COUPLE OF DAYS

Free trial experience for 30 days

#1

Guided
installation

We will install BI4Dynamics with all out-of-the-box content in just a few hours.



#2

Power bi
& Excel

And connect 150 predefined Power BI and Excel reports available for desktop and mobile.



#3

Get
insights

Feel the power of ready-to-use BI solutions and make a fully informed decision.



#4

Defining
gap

BI4Dynamics supports 80% of customer requirements. Gap is covered using the wizard.



#5

Risk-free
Decision

Risk-free decision after 30 days of exploring your data on a fully running version of BI4Dynamics



THE NEW ERA OF BUSINESS INTELLIGENCE

Get Started Today.

www.bi4dynamics.com
sales@bi4dynamics.com

